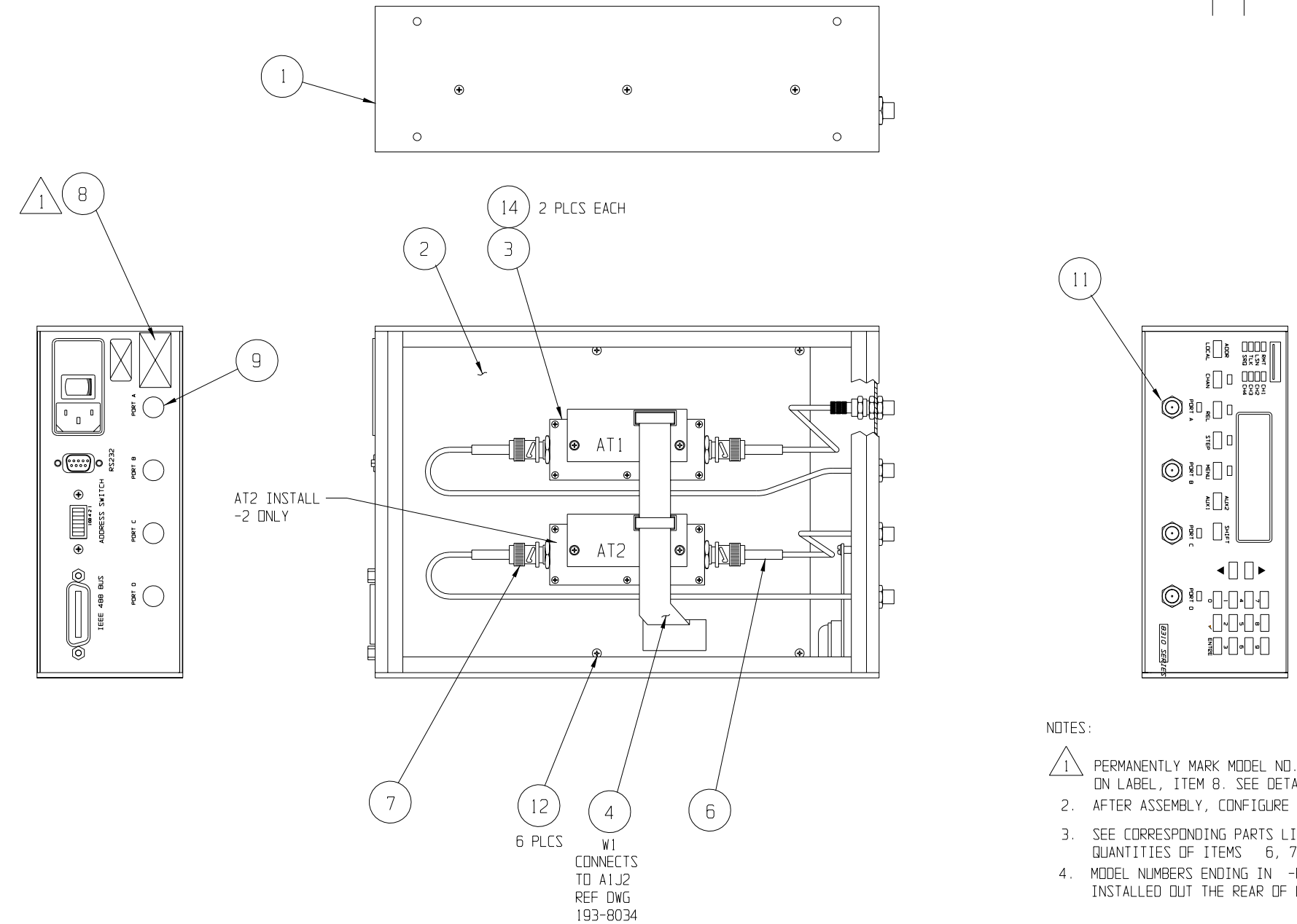


DWG. NO.	SH 1	REV.	1
REVISIONS			
REV.	DESCRIPTION	DATE	APPROVED
A	ERN 02-018		



- NOTES:
- PERMANENTLY MARK MODEL NO., CHANNEL NO. & SERIAL NO. ON LABEL, ITEM 8. SEE DETAIL A.
 - AFTER ASSEMBLY, CONFIGURE AND TEST.
 - SEE CORRESPONDING PARTS LISTS FOR QUANTITIES OF ITEMS 6, 7, 9, 10 & 14.
 - MODEL NUMBERS ENDING IN -R ARE TO BE INSTALLED OUT THE REAR OF UNIT.

Weinschel Corp
 CAGE CODE 93459 MADE IN THE USA
 MODEL: 8310-2-X SERNO:
 FREQ: DC-1.0GHz(75 OHM)
 CHAN: X
 ATTEN: 63/1dB STEPS CE

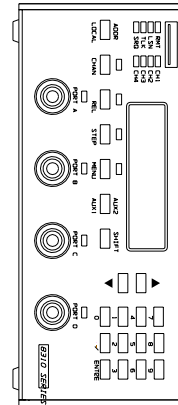
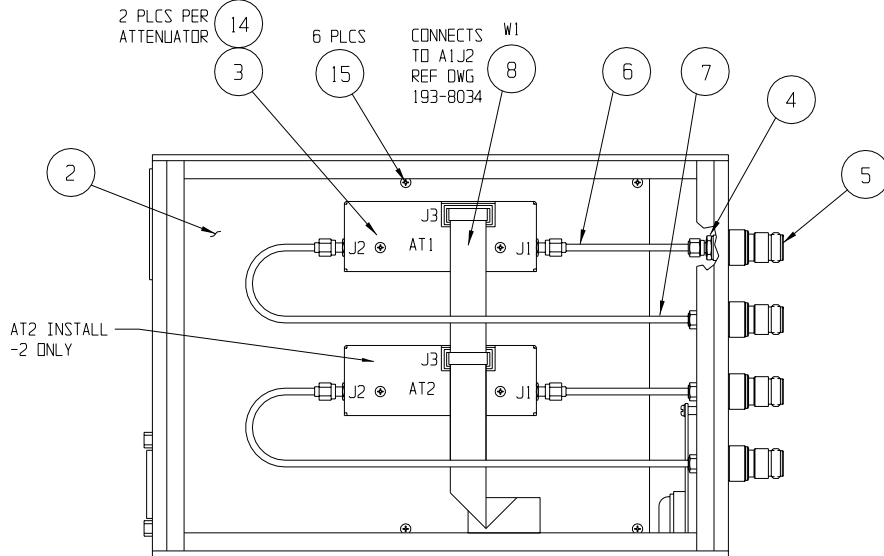
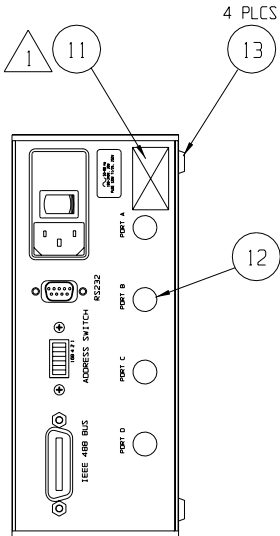
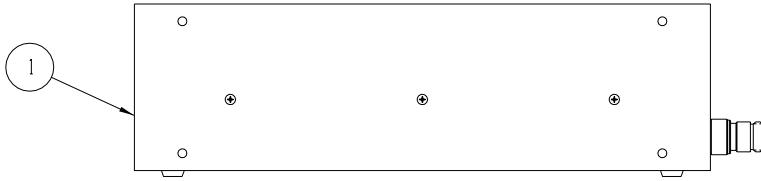
DETAIL A
 SCALE 2:1

PROPRIETARY NOTICE
 THIS DOCUMENT IS COMMERCIAL CONFIDENTIAL AND THE INFORMATION CONTAINED THEREIN MAY NOT BE DISSEMINATED, NOR IS REPRODUCTION PERMITTED EXCEPT BY WRITTEN AUTHORIZATION.

8310-2-2-R	193-7002-2
8310-2-2-F	193-7002-2
8310-2-R	193-7002-1
8310-2-F	193-7002-1
MODEL NO.	PARTS LIST

QTY REQD	FSCM NO.	PART OR IDENTIFYING NO.	NOMENCLATURE OR DESCRIPTION	MATERIAL SPECIFICATION
PARTS LIST				
UNLESS OTHERWISE SPECIFIED DIMENSIONS ARE IN INCHES TOLERANCES ARE: FRACTIONS: ± 1/64 DECIMALS: .XX ± .01 ANGLES: ± 1/2° MATERIAL: _____ FINISH: _____			CONTRACT NO. _____ APPROVALS: _____ DATE: 2/13/02 CHECKED: _____ ENGR: KNILL DATE: 2/02 ISSUED: _____	
NEXT ASSY: 8310		Weinschel Corporation ASSY, ATTEN UNIT, MODEL 8310		
APPLICATION: DO NOT SCALE DRAWING		SIZE: C	FSCM NO.: 93459	DWG. NO.: 193-7002-1
		SCALE: 1/2		REV. A
		SHEET 1 OF 1		

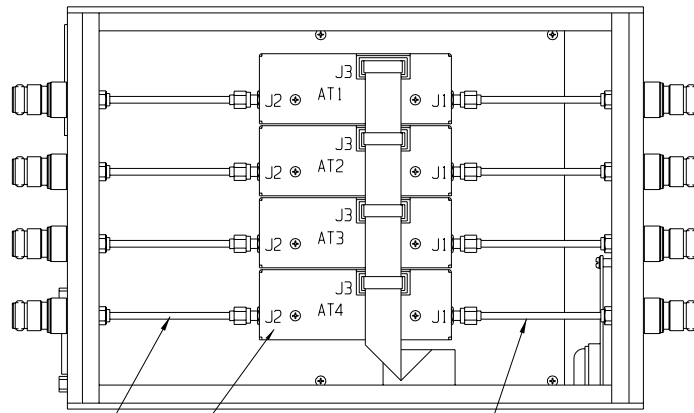
REVISIONS			
REV.	DESCRIPTION	DATE	APPROVED
A	ERN 99-51		
B	ECN 99-259	GT 10-21-99	
C	ECN 00-247	WK 6-00	
D	ECN 02-006	JMB 01-04-02	



Weinschel Corp
 346 CEE ROAD
 MODEL: 8310-35-X SERVO:
 FREQ: DC TO X GHz
 CHAN: X
 ATTEN: 127/1dB STEPS

REPLACE "X" WITH FREQ RANGE
 2 GHz FOR -1 THRU -4 ASSY
 3 GHz FOR -5 THRU -8 ASSY

DETAIL A



-T CONFIGURATIONS

AT4 INSTALL
 -4 ONLY

PROPRIETARY NOTICE
 THIS DOCUMENT IS COMMERCIAL CONFIDENTIAL AND THE
 INFORMATION CONTAINED THEREIN MAY NOT BE DISSEM-
 INATED, NOR IS REPRODUCTION PERMITTED EXCEPT BY
 WRITTEN AUTHORIZATION.

NOTES:

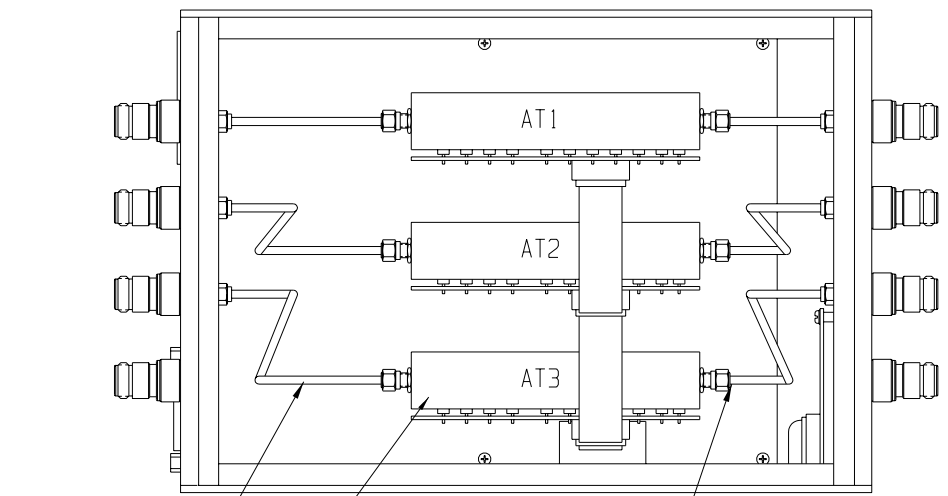
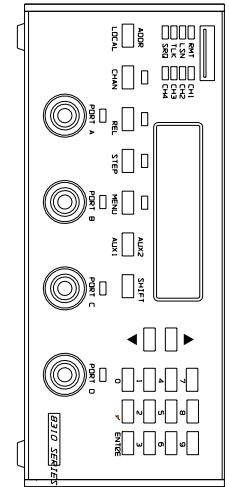
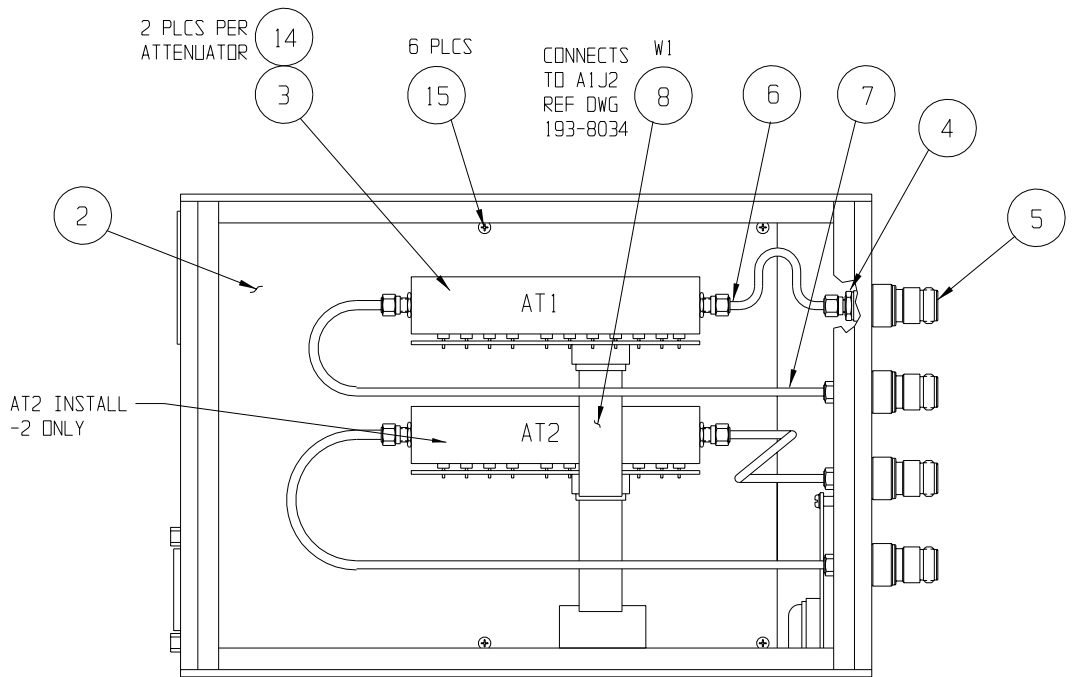
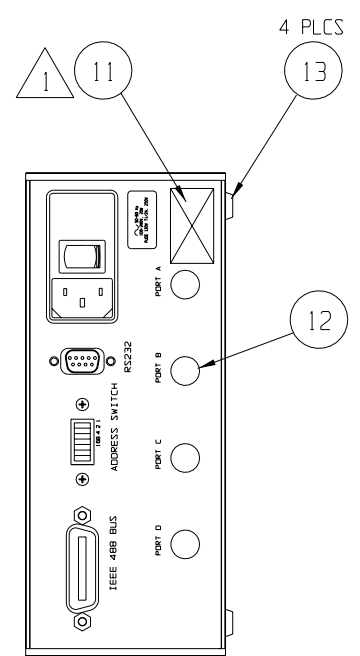
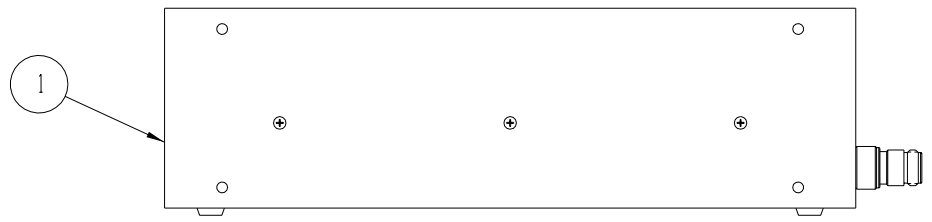
- 1 PERMANENTLY MARK MODEL NO., CHANNEL NO. & SERIAL NO. ON LABEL, ITEM 11. SEE DETAIL A.
2. AFTER ASSEMBLY, CONFIGURE AND TEST.
3. SEE CORRESPONDING PARTS LISTS FOR QUANTITIES OF ITEMS 4, 5, 6, 7, 12 & 14.
4. MODEL NUMBERS ENDING IN -R ARE TO BE INSTALLED OUT THE REAR OF UNIT.

8310-35-4-T	193-7035-4
8310-35-3-T	193-7035-3
8310-35-2-R	193-7035-2
8310-35-2-F	193-7035-2
8310-35-R	193-7035-1
8310-35-F	193-7035-1
MODEL NO.	PARTS LIST

8310-35-4-T-E	193-7035-8
8310-35-3-T-E	193-7035-7
8310-35-2-R-E	193-7035-6
8310-35-2-F-E	193-7035-6
8310-35-R-E	193-7035-5
8310-35-F-E	193-7035-5
MODEL NO.	PARTS LIST

QTY REQD	FSCM NO.	PART OR IDENTIFYING NO.	NOMENCLATURE OR DESCRIPTION	MATERIAL SPECIFICATION
PARTS LIST				
UNLESS OTHERWISE SPECIFIED DIMENSIONS ARE IN INCHES. TOLERANCES ARE: FRACTIONS DECIMALS ANGLES ± 1/64 .005 ± .01 ± 1/2°			CONTRACT NO.	
MATERIAL			MCE/Weinschel Corporation	
FINISH			ASSY, ATTEN UNIT, MODEL 8310	
NEXT ASSY USED ON			APPROVALS DATE	
APPLICATION			DRAWN G. THOMAS 4-6-99	
			CHECKED	
			ENGR KNILL 4-25-99	
			ISSUED	
8310		SIZE FSCM NO. DWG. NO.		
		C 93459 193-7035		
		SCALE 1/2		
		SHEET 1 OF 1		

REVISIONS			
REV.	DESCRIPTION	DATE	APPROVED
A	ERN 99-63		
B	ECN 99-259	GT 10-21-99	
C	ECN 00-6	WK 1-12-00	
D	ECN 02-214	AH 6-11-02	



- NOTES:
- PERMANENTLY MARK MODEL NO., CHANNEL NO. & SERIAL NO. ON LABEL, ITEM 11. SEE DETAIL A.
 - AFTER ASSEMBLY, CONFIGURE AND TEST.
 - SEE CORRESPONDING PARTS LISTS FOR QUANTITIES OF ITEMS 4, 5, 6, 7, 12 & 14.
 - MODEL NUMBERS ENDING IN -R ARE TO BE INSTALLED OUT THE REAR OF UNIT.

MCE / Weinschel
 CASE CODE 8310 MARK IN THE USA
 MODEL: 8310-36-X SERNO:
 FREQ: DC TO 2 GHz
 CHAN: X
 ATTEN: 64.5/1dB STEPS CE

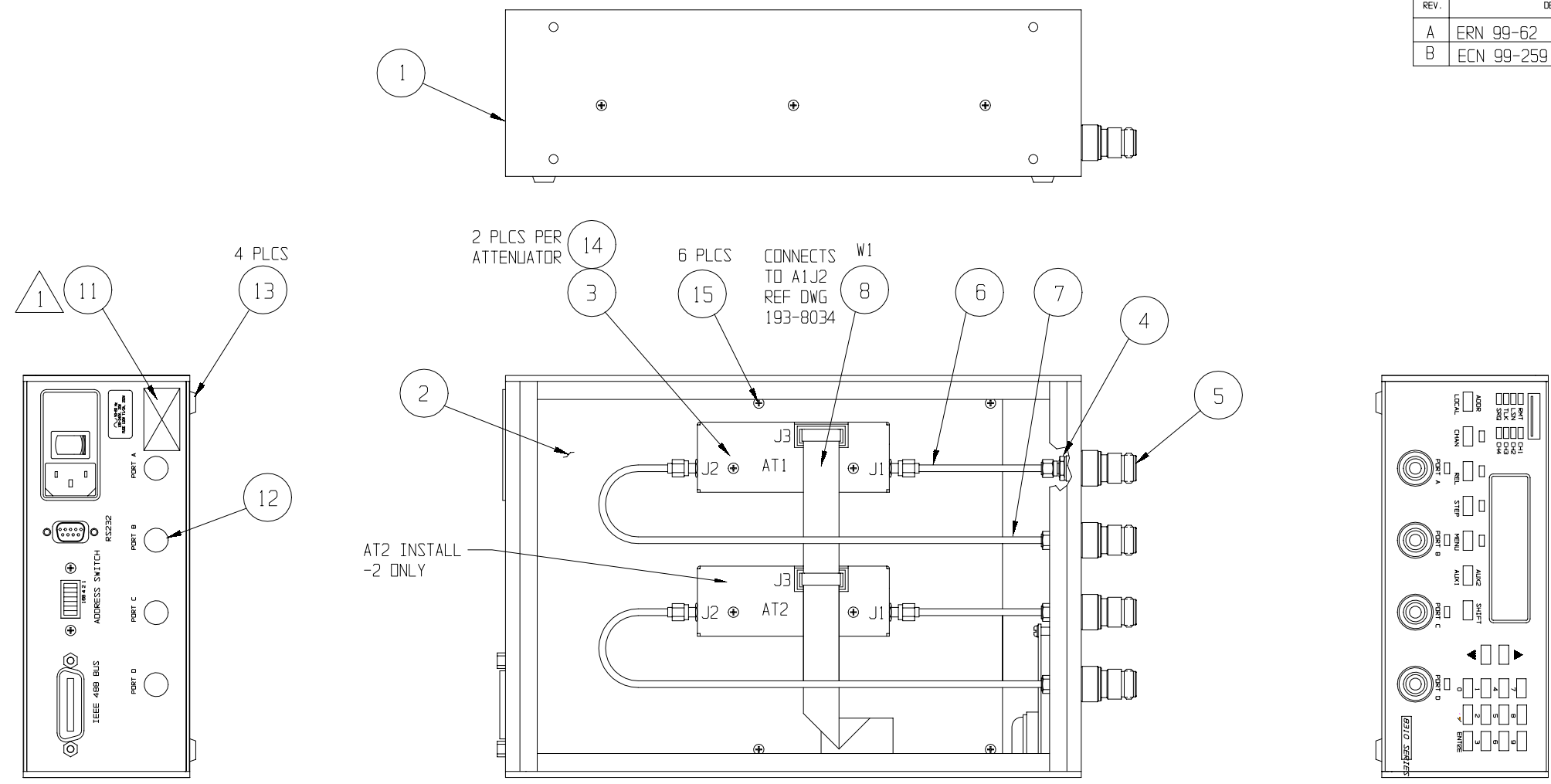
DETAIL A

8310-36-3-T	193-7036-3	8310-36-3-T-E	193-7036-7
8310-36-2-R	193-7036-2	8310-36-2-R-E	193-7036-6
8310-36-2-F	193-7036-2	8310-36-2-F-E	193-7036-6
8310-36-R	193-7036-1	8310-36-R-E	193-7036-5
8310-36-F	193-7036-1	8310-36-F-E	193-7036-5
MODEL NO.	PARTS LIST	MODEL NO.	PARTS LIST

PROPRIETARY NOTICE
 THIS DOCUMENT IS COMMERCIAL CONFIDENTIAL AND THE INFORMATION CONTAINED THEREIN MAY NOT BE DISSEMINATED, NOR IS REPRODUCTION PERMITTED EXCEPT BY WRITTEN AUTHORIZATION.

QTY	FSCM	PART OR IDENTIFYING NO.	NOMENCLATURE OR DESCRIPTION	MATERIAL SPECIFICATION
PARTS LIST				
UNLESS OTHERWISE SPECIFIED DIMENSIONS ARE IN INCHES TOLERANCES ARE:		CONTRACT NO.		
FRACTIONS: DECIMALS: ANGLES:		APPROVALS		
± 1/64 ± .01 ± 1/2°		DATE		
MATERIAL		DRAWN G. THOMAS 4-22-99		
FINISH		CHECKED		
NEXT ASSY USED ON		ENGR: KNILL 4-25-99		
APPLICATION		ISSUED		
8310		MCE/Weinschel Corporation		
		ASSY, ATTEN UNIT, MODEL 8310		
		SIZE FSCM NO. DWG. NO. 193-7036 THRU -7		
		SCALE 1/2 SHEET 1 OF 1		

REVISIONS			
REV.	DESCRIPTION	DATE	APPROVED
A	ERN 99-62		
B	ECN 99-259	GT 10-21-99	

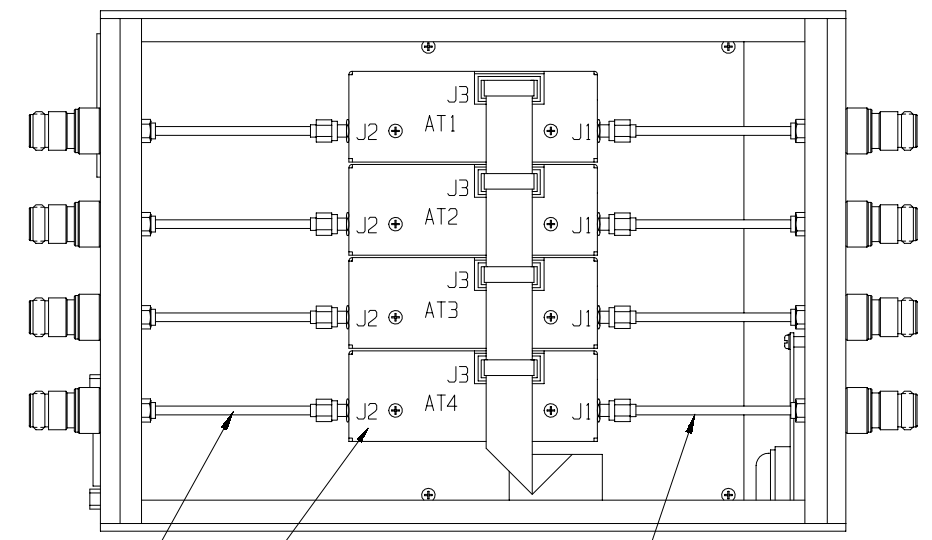


- NOTES:
- PERMANENTLY MARK MODEL NO., CHANNEL NO. & SERIAL NO. ON LABEL, ITEM 11. SEE DETAIL A.
 - AFTER ASSEMBLY, CONFIGURE AND TEST.
 - SEE CORRESPONDING PARTS LISTS FOR QUANTITIES OF ITEMS 4, 5, 6, 7, 12 & 14.
 - MODEL NUMBERS ENDING IN -R ARE TO BE INSTALLED OUT THE REAR OF UNIT.

8310-37-4-T	193-7037-4
8310-37-3-T	193-7037-3
8310-37-2-R	193-7037-2
8310-37-2-F	193-7037-2
8310-37-R	193-7037-1
8310-37-F	193-7037-1
MODEL NO.	PARTS LIST

Weinschel Corp
 CASE CODE 83450 MADE IN THE USA
 MODEL: 8310-37-X SERNO:
 FREQ: DC TO 2 GHz
 CHAN: X
 ATTEN: 63.75/25dB STEPS CE

DETAIL A

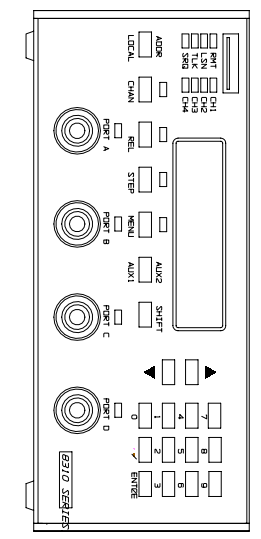
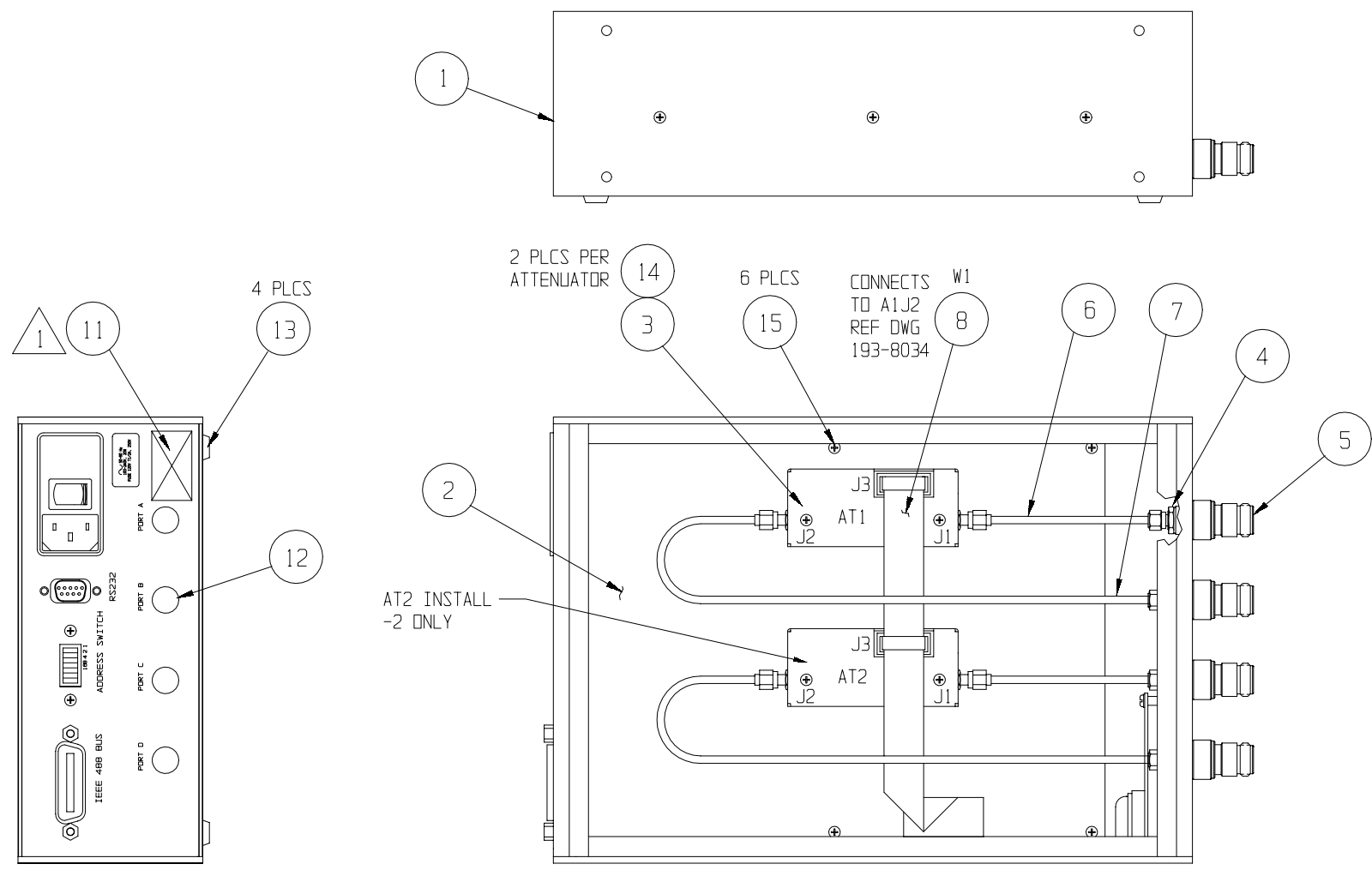


AT4 INSTALL
 -4 ONLY

PROPRIETARY NOTICE
 THIS DOCUMENT IS COMMERCIAL CONFIDENTIAL AND THE INFORMATION CONTAINED THEREIN MAY NOT BE DISSEMINATED, NOR IS REPRODUCTION PERMITTED EXCEPT BY WRITTEN AUTHORIZATION.

QTY	FSCM	PART OR	NOMENCLATURE	MATERIAL
REQD	NO.	IDENTIFYING NO.	OR DESCRIPTION	SPECIFICATION
PARTS LIST				
UNLESS OTHERWISE SPECIFIED DIMENSIONS ARE IN INCHES TOLERANCES ARE: FRACTIONS DECIMALS ANGLES $\pm 1/64$.XX $\pm .01$ $\pm 1/2^\circ$.XXX $\pm .003$				
MATERIAL		CONTRACT NO.		
FINISH		APPROVALS DATE		
NEXT ASSY		DRAWN G. THOMAS 4-22-99		
APPLICATION		CHECKED		
DO NOT SCALE DRAWING		ENGR. KNILL 4-27-99		
		ISSUED		
		SIZE FSCM NO. DWG. NO. REV.		
		C 93459 193-7037 -1 THRU -4 B		
		SCALE 1/2 SHEET 1 OF 1		

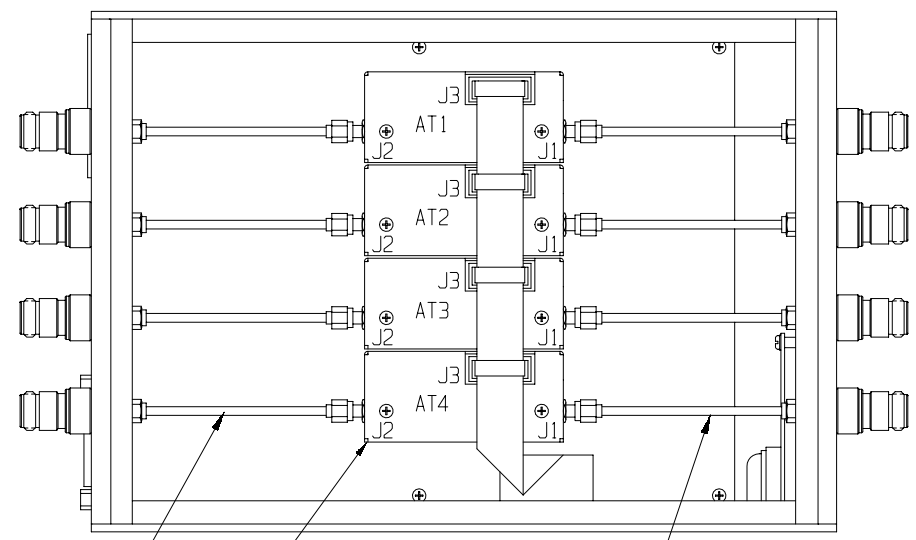
REVISIONS			
REV.	DESCRIPTION	DATE	APPROVED
A	ERN 99-51		
B	ECN 99-259	GT 10-21-99	
C	ECN 00-472	JMB 12-4-00	



Weinschel Corp
MADE IN THE USA
 MODEL: 8310-38-X SERNO:
 FREQ: DC TO X GHz
 CHAN: X
 ATTN: 63 /dB STEPS

REPLACE "X" WITH FREQ RANGE
 2 GHz FOR -1 THRU -4 ASSY
 3 GHz FOR -5 THRU -8 ASSY

DETAIL A



8310-38-4-T-E	193-7038-8
8310-38-3-T-E	193-7038-7
8310-38-2-R-E	193-7038-6
8310-38-2-F-E	193-7038-6
8310-38-R-E	193-7038-5
8310-38-F-E	193-7038-5
8310-38-4-T	193-7038-4
8310-38-3-T	193-7038-3
8310-38-2-R	193-7038-2
8310-38-2-F	193-7038-2
8310-38-R	193-7038-1
8310-38-F	193-7038-1
MODEL NO.	PARTS LIST

NOTES:

- PERMANENTLY MARK MODEL NO., CHANNEL NO. & SERIAL NO. ON LABEL, ITEM 11. SEE DETAIL A.
- AFTER ASSEMBLY, CONFIGURE AND TEST.
- SEE CORRESPONDING PARTS LISTS FOR QUANTITIES OF ITEMS 4, 5, 6, 7, 12 & 14.
- MODEL NUMBERS ENDING IN -R ARE TO BE INSTALLED OUT THE REAR OF UNIT.

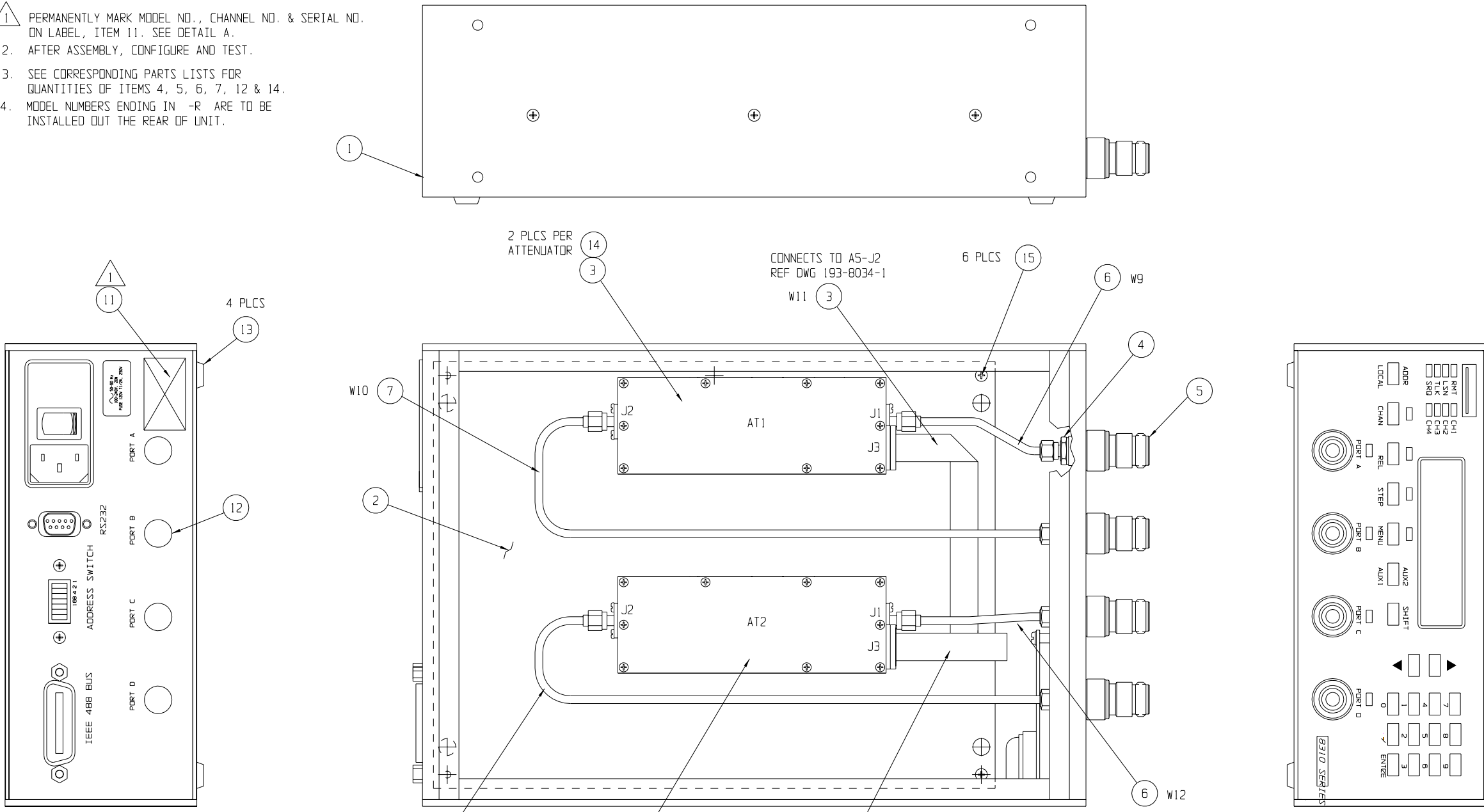
AT4 INSTALL
 -4 ONLY

PROPRIETARY NOTICE
 THIS DOCUMENT IS COMMERCIAL CONFIDENTIAL AND THE INFORMATION CONTAINED THEREIN MAY NOT BE DISSEMINATED, NOR IS REPRODUCTION PERMITTED EXCEPT BY WRITTEN AUTHORIZATION.

QTY REQD	FSCM NO.	PART OR IDENTIFYING NO.	NOMENCLATURE OR DESCRIPTION	MATERIAL SPECIFICATION
PARTS LIST				
UNLESS OTHERWISE SPECIFIED DIMENSIONS ARE IN INCHES TOLERANCES ARE: FRACTIONS DECIMALS ANGLES $\pm \frac{1}{64}$.XX $\pm .01$ $\pm \frac{1}{2}^\circ$.XXX $\pm .003$ $\pm \frac{1}{2}^\circ$			CONTRACT NO.	
MATERIAL			APPROVALS DATE	
FINISH			DRAWN G. THOMAS 4-7-99	
NEXT ASSY USED ON			CHECKED	
APPLICATION			ENGR. KNILL 4-27-99	
DO NOT SCALE DRAWING			ISSUED	
			Weinschel Corporation	
			ASSY, ATTN UNIT, MODEL 8310	
			SIZE FSCM NO. DWG. NO.	REV.
			C 93459 193-7038	-1 THRU -8 C
			SCALE 1/2	SHEET 1 OF 1

DWG. NO.	SH	REV.	REVISIONS	
	ZONE	REV.	DESCRIPTION	DATE
	A	ERN 02-087		APPROVED

- NOTES:
- PERMANENTLY MARK MODEL NO., CHANNEL NO. & SERIAL NO. ON LABEL, ITEM 11. SEE DETAIL A.
 - AFTER ASSEMBLY, CONFIGURE AND TEST.
 - SEE CORRESPONDING PARTS LISTS FOR QUANTITIES OF ITEMS 4, 5, 6, 7, 12 & 14.
 - MODEL NUMBERS ENDING IN -R ARE TO BE INSTALLED OUT THE REAR OF UNIT.



MCE / Weinschel
 CAGE CODE 93459 MADE IN THE USA
 MODEL: 8310-136-X SERNO:
 FREQ: .8 TO 2.5 GHz
 CHAN: X
 ATTEN: 63.75/.25dB STEPS

DETAIL A

8310-136-2-R	193-7136-2
8310-136-2-F	193-7136-2
8310-136-R	193-7136-1
8310-136-F	193-7136-1
MODEL NO.	PARTS LIST

QTY REQD	FSCM NO.	PART OR IDENTIFYING NO.	APPENDIX OR DESCRIPTION	MATERIAL SPECIFICATION	ZONE	ITEM NO.
PARTS LIST						
UNLESS OTHERWISE SPECIFIED DIMENSIONS ARE IN INCHES. TOLERANCES ARE: FRACTIONS DECIMALS ANGLES ± 1/64 .xx ± .01 ± 1/2° .xxx ± .003			MCE/Weinschel Corporation			
APPROVALS		DATE		ASSEMBLY, ATTEN UNIT MODEL 8310 (+5V)		
DRAWN HOPKINS		5/21/02		SIZE FSCM NO. DWG. NO. 193-7136 -1		
CHECKED				REV. A		
ENGR. KNILL		5/02		SCALE 1/1		
ISSUED				SHEET 1 OF 1		

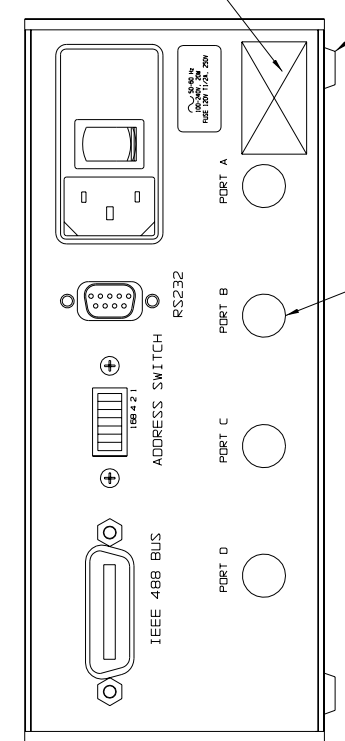
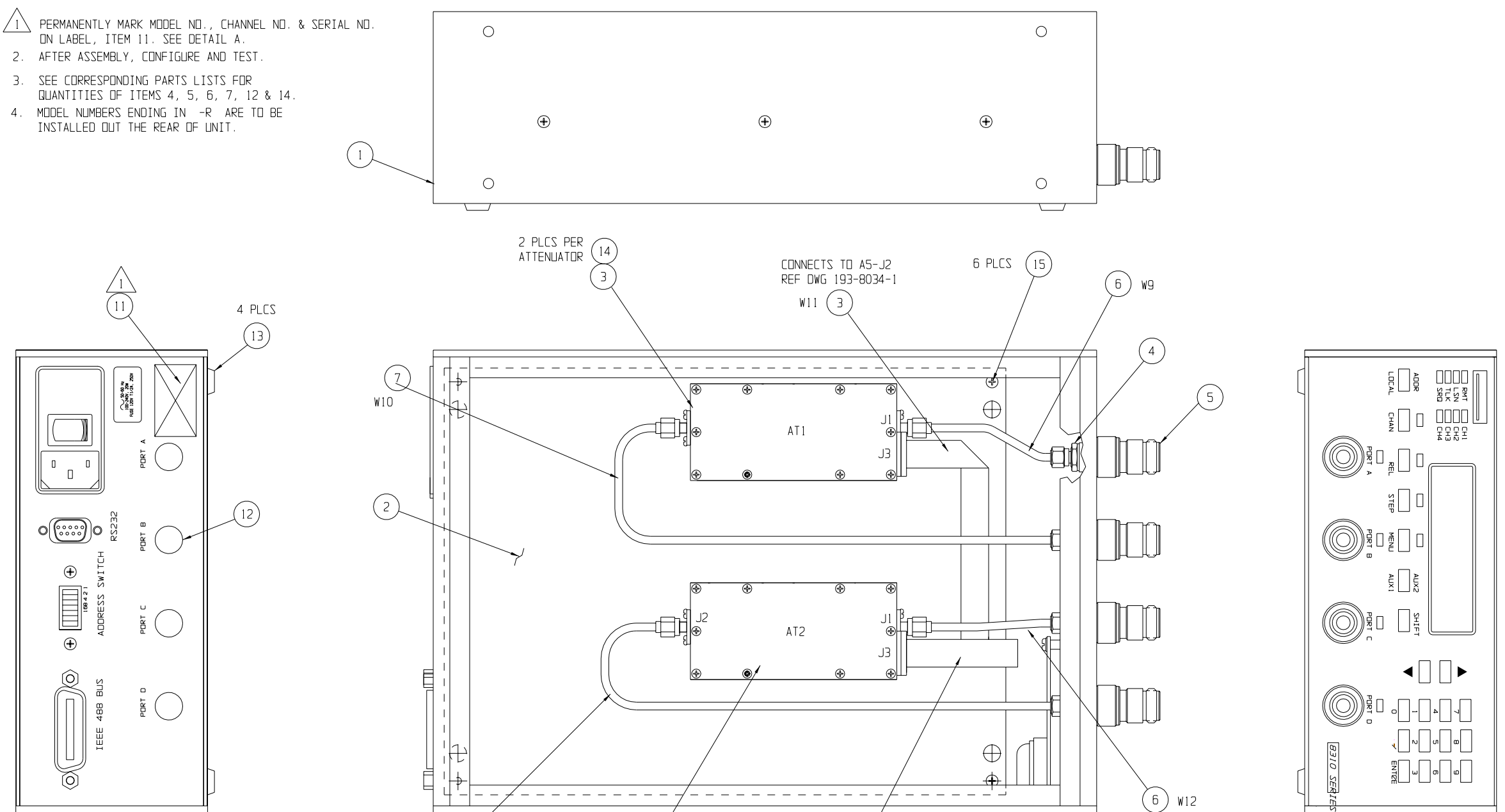
PROPRIETARY NOTICE
 THIS DOCUMENT IS COMMERCIAL CONFIDENTIAL AND THE INFORMATION CONTAINED THEREIN MAY NOT BE DISSEMINATED, NOR IS REPRODUCTION PERMITTED EXCEPT BY WRITTEN AUTHORIZATION.

MATERIAL	8310
FINISH	
APPLICATION	DO NOT SCALE DRAWING

DWG. NO.	SH	REV.	1	
REVISIONS				
ZONE	REV.	DESCRIPTION	DATE	APPROVED
A	ERN 02-087			

NOTES:

- PERMANENTLY MARK MODEL NO., CHANNEL NO. & SERIAL NO. ON LABEL, ITEM 11. SEE DETAIL A.
- AFTER ASSEMBLY, CONFIGURE AND TEST.
- SEE CORRESPONDING PARTS LISTS FOR QUANTITIES OF ITEMS 4, 5, 6, 7, 12 & 14.
- MODEL NUMBERS ENDING IN -R ARE TO BE INSTALLED OUT THE REAR OF UNIT.



MCE / Weinschel
 CAGE CODE 93459 MADE IN THE USA
 MODEL: 8310-137-X SERNO:
 FREQ: B TO 3.0 GHz
 CHAN: X
 ATTEN: 63/1dB STEPS

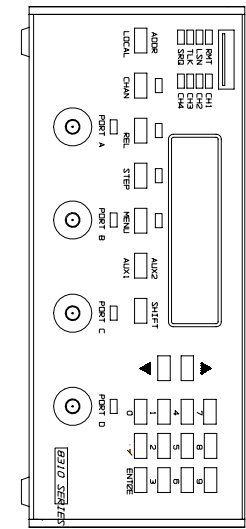
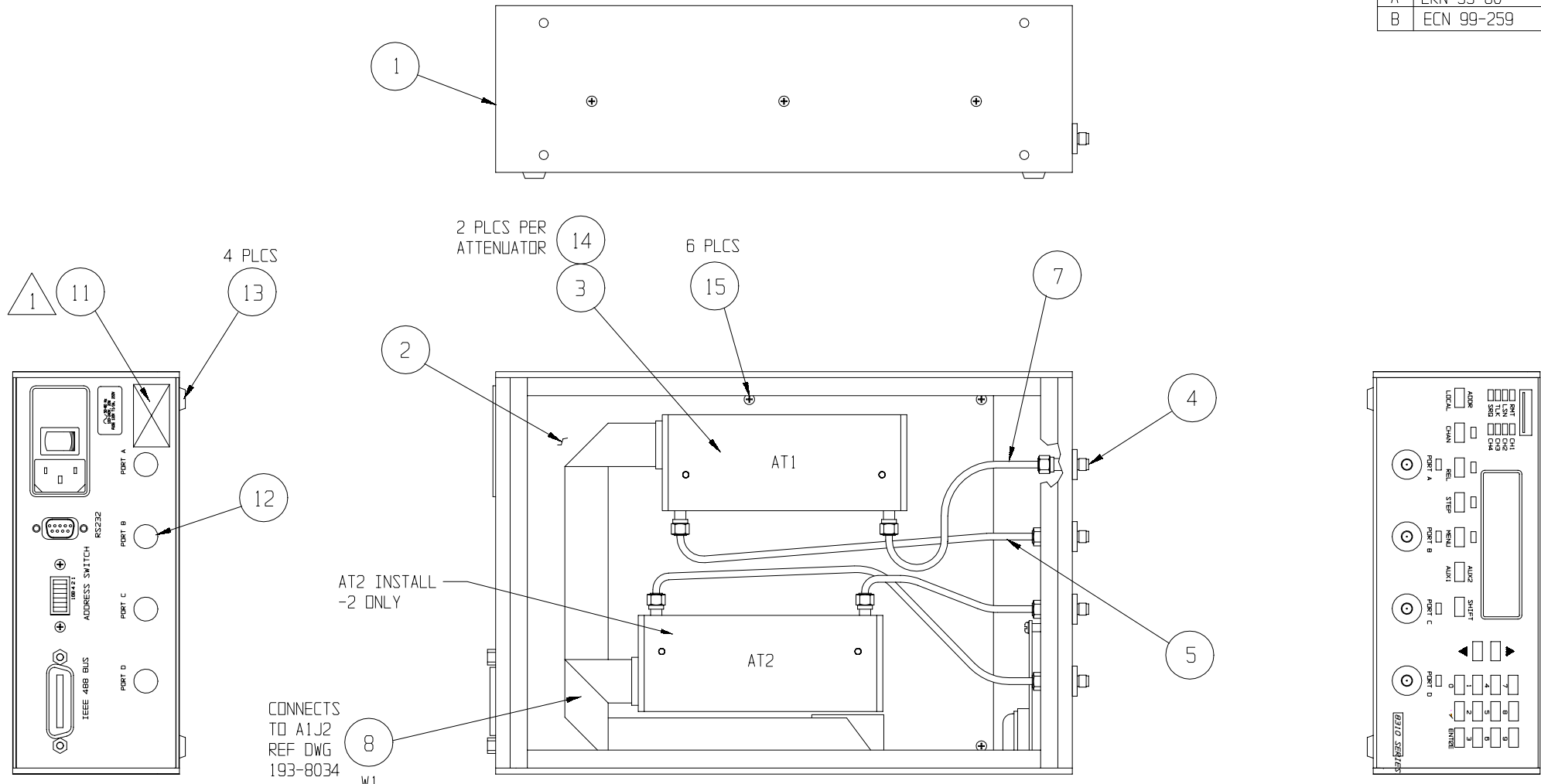
DETAIL A

8310-137-2-R	193-7137-2
8310-137-2-F	193-7137-2
8310-137-R	193-7137-1
8310-137-F	193-7137-1
MODEL NO.	PARTS LIST

QTY REQD	FSCM NO.	PART OR IDENTIFYING NO.	NOMENCLATURE OR DESCRIPTION	MATERIAL SPECIFICATION	ZONE	ITEM NO.
PARTS LIST						
UNLESS OTHERWISE SPECIFIED DIMENSIONS ARE IN INCHES TOLERANCES ARE: FRACTIONS DECIMALS ANGLES			MCE/Weinschel Corporation			
MATERIAL: 8310 FINISH: USED ON APPLICATION: DO NOT SCALE DRAWING			CONTRACT NO.: APPROVALS: HOPKINS DATE: 5/21/02 ENGR: KNILL DATE: 5/02 ISSUED:		ASSEMBLY, ATEN UNIT MODEL 8310 (+5V)	
SIZE: D FSCM NO.: 93459 SCALE: 1/1			DWG. NO.: 193-7137 THRU: -1 -2		REV. A SHEET 1 OF 1	

PROPRIETARY NOTICE
 THIS DOCUMENT IS COMMERCIAL CONFIDENTIAL AND THE INFORMATION CONTAINED THEREIN MAY NOT BE DISSEMINATED, NOR IS REPRODUCTION PERMITTED EXCEPT BY WRITTEN AUTHORIZATION.

REVISIONS			
REV.	DESCRIPTION	DATE	APPROVED
A	ERN 99-60		
B	ECN 99-259	GT 10-21-99	



8310-201-2-R	193-7201-2
8310-201-2-F	193-7201-2
8310-201-R	193-7201-1
8310-201-F	193-7201-1
MODEL NO.	PARTS LIST

NOTES:

- 1 PERMANENTLY MARK MODEL NO., CHANNEL NO. & SERIAL NO. ON LABEL, ITEM 11. SEE DETAIL A.
- 2. AFTER ASSEMBLY, CONFIGURE AND TEST.
- 3. SEE CORRESPONDING PARTS LISTS FOR QUANTITIES OF ITEMS 4, 5, 7, 12 & 14.
- 4. MODEL NUMBERS ENDING IN -R ARE TO BE INSTALLED OUT THE REAR OF UNIT.

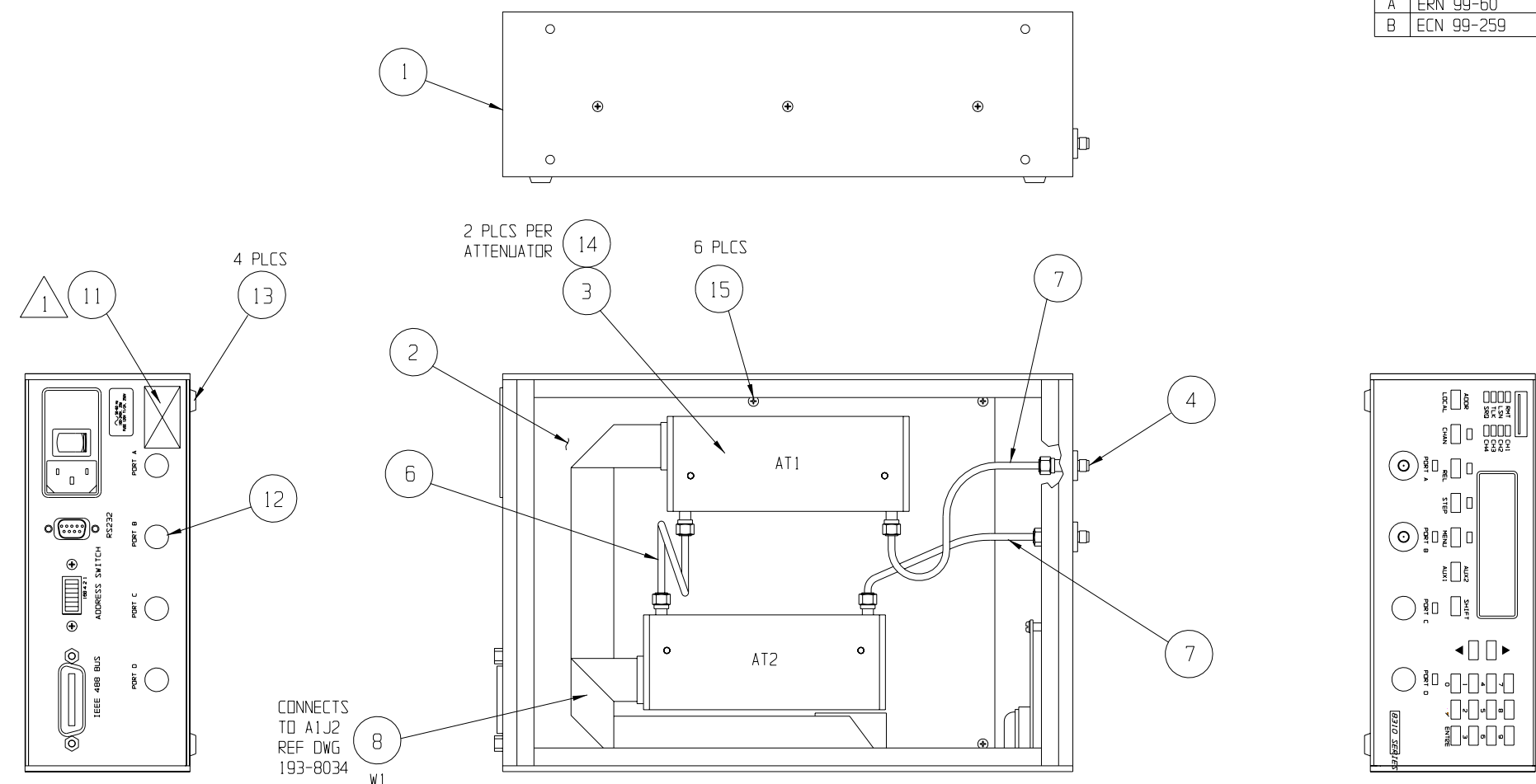
Weinschel Corp
 MADE IN THE USA
 MODEL: 8310-201-X SERNO:
 FREQ: DC TO 18 GHz
 CHAN: X
 ATTEN: 70 /10dB STEPS CE

DETAIL A

PROPRIETARY NOTICE
 THIS DOCUMENT IS COMMERCIAL CONFIDENTIAL AND THE INFORMATION CONTAINED THEREIN MAY NOT BE DISSEMINATED, NOR IS REPRODUCTION PERMITTED EXCEPT BY WRITTEN AUTHORIZATION.

QTY REQD	FSCN NO.	PART OR IDENTIFYING NO.	NOMENCLATURE OR DESCRIPTION	MATERIAL SPECIFICATION
PARTS LIST				
UNLESS OTHERWISE SPECIFIED DIMENSIONS ARE IN INCHES TOLERANCES ARE: FRACTIONS: ± 1/64 DECIMALS: .XX ± .01 ANGLES: .XXX ± .003 ± 1/2°			CONTRACT NO.	
MATERIAL		Weinschel Corporation		
FINISH		ASSY, ATTEN UNIT, MODEL 8310		
NEXT ASSY	USED ON	APPROVALS	DATE	SIZE FSCN NO. DWG. NO. REV.
		ENGR. KNILL	4-22-99	C 93459 193-7201-2 B
APPLICATION		DO NOT SCALE DRAWING		
		SCALE 1/2		SHEET 1 OF 1

DWG. NO.	SH 1	REV.	1
REVISIONS			
REV.	DESCRIPTION	DATE	APPROVED
A	ERN 99-60		
B	ECN 99-259	GT 10-21-99	



8310-203-R	193-7202-2
8310-203-F	193-7202-2
8310-202-R	193-7202-1
8310-202-F	193-7202-1
MODEL NO.	PARTS LIST

193-7202-1

Weinschel Corp
CASE CODE 8949 MADE IN THE USA
MODEL: 8310-202-X SERNO:
FREQ: DC TO 18 GHz
CHAN: X
ATTEN: 121 /1dB STEPS CE

193-7202-2

Weinschel Corp
CASE CODE 8949 MADE IN THE USA
MODEL: 8310-203-X SERNO:
FREQ: DC TO 26 GHz
CHAN: X
ATTEN: 105 /1dB STEPS CE

DETAIL A

PROPRIETARY NOTICE
THIS DOCUMENT IS COMMERCIAL CONFIDENTIAL AND THE INFORMATION CONTAINED THEREIN MAY NOT BE DISSEMINATED, NOR IS REPRODUCTION PERMITTED EXCEPT BY WRITTEN AUTHORIZATION.

NOTES:

1. PERMANENTLY MARK MODEL NO., CHANNEL NO. & SERIAL NO. ON LABEL, ITEM 11. SEE DETAIL A.
2. AFTER ASSEMBLY, CONFIGURE AND TEST.
3. SEE CORRESPONDING PARTS LISTS FOR QUANTITIES OF ITEMS 4, 6, 7, 12 & 14.
4. MODEL NUMBERS ENDING IN -R ARE TO BE INSTALLED OUT THE REAR OF UNIT.

QTY REQD	FSCM NO.	PART OR IDENTIFYING NO.	NOMENCLATURE OR DESCRIPTION	MATERIAL SPECIFICATION
PARTS LIST				
UNLESS OTHERWISE SPECIFIED DIMENSIONS ARE IN INCHES TOLERANCES ARE: FRACTIONS DECIMALS ANGLES $\pm 1/64$.xxx $\pm .01$ $\pm 1/2^\circ$		CONTRACT NO.		
MATERIAL		APPROVALS	DATE	
FINISH		DRAWN G. THOMAS	4-16-99	
NEXT ASSY		CHECKED		
USED ON		ENGR. KNILL	4-22-99	
APPLICATION		ISSUED		
8310			Weinschel Corporation	
			ASSY, ATTEN UNIT, MODEL 8310	
SIZE FSCM NO.		DWG. NO.		REV.
C 93459		193-7202 -1		B
SCALE 1/2			SHEET 1 OF 1	

8

7

6

5

4

3

1

NOTES: UNLESS OTHERWISE SPECIFIED.

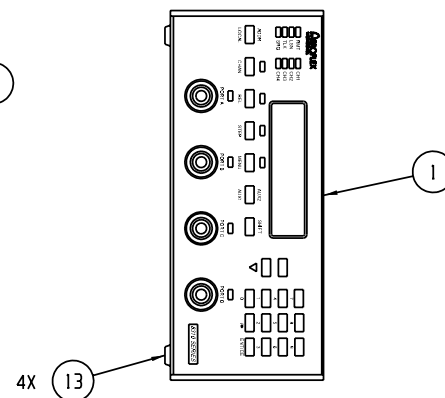
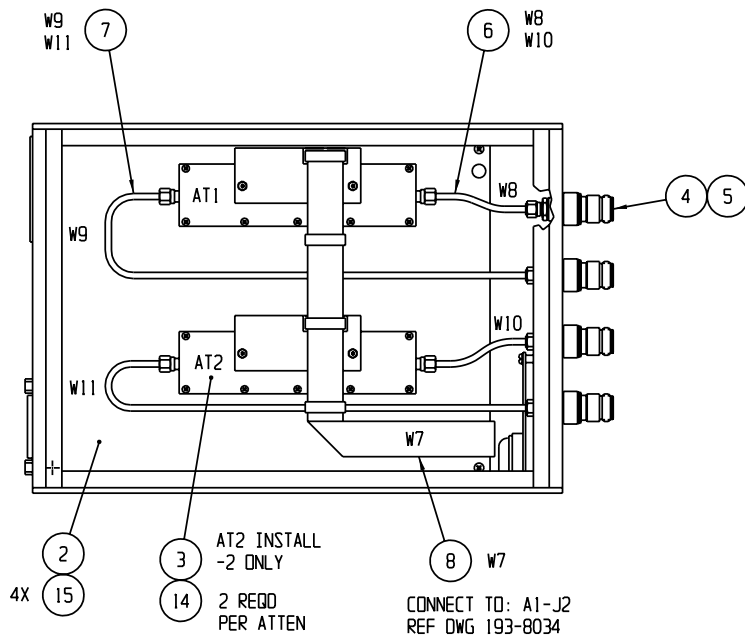
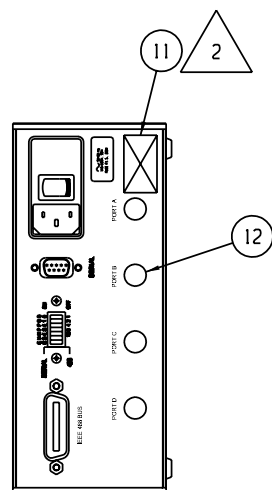
1. APPLY LOCITE, #242 ON ALL HARDWARE AS REQUIRED.

2. PERMANENTLY MARK MODEL NO., CHANNEL NO. & SERIAL NO. ON LABEL, ITEM 11. SEE DETAIL A.

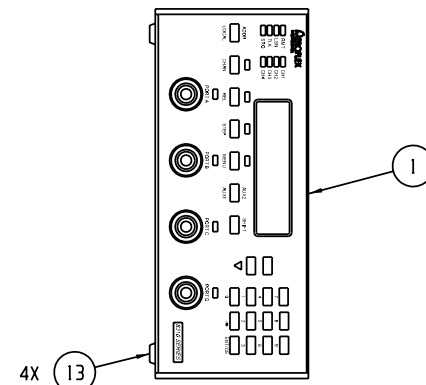
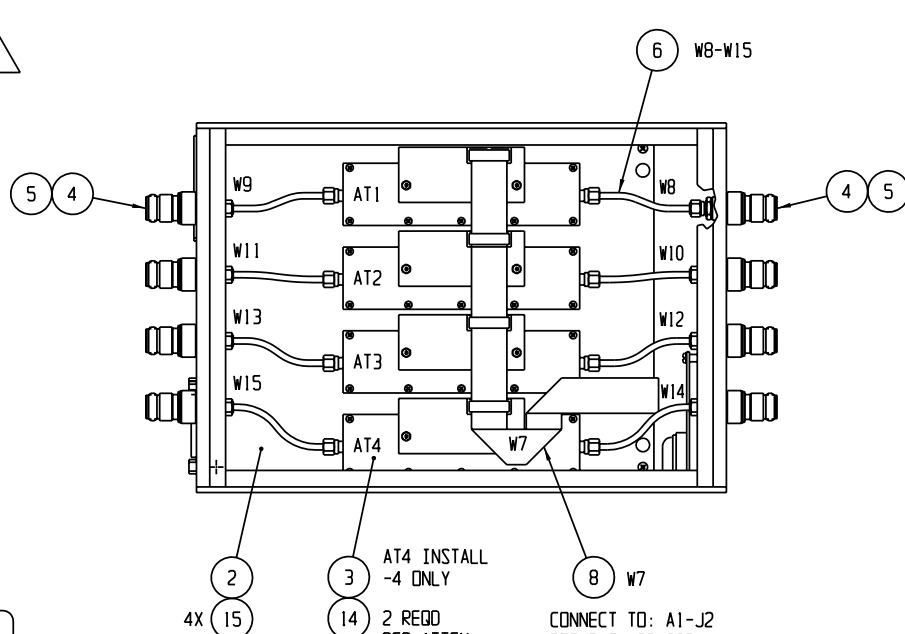
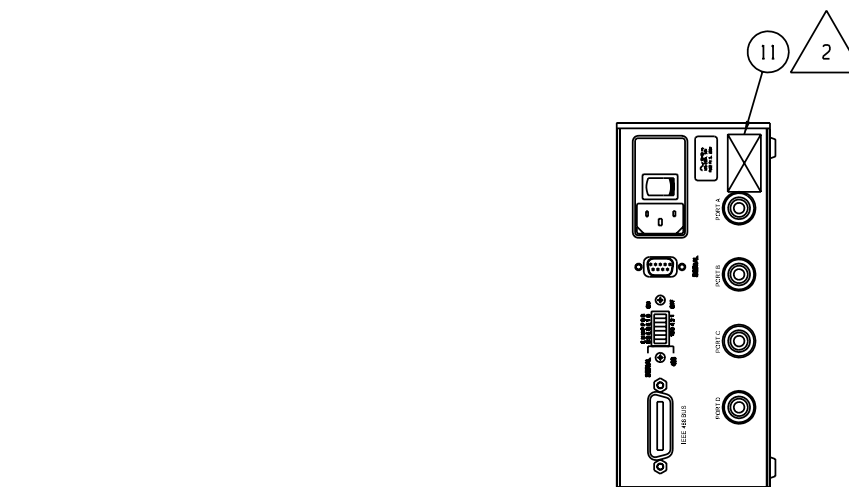
3. AFTER ASSEMBLY, CONFIGURE AND TEST.

4. MODEL NUMBERS ENDING IN -R ARE TO BE INSTALLED OUT THE REAR OF UNIT.

5. SEE CORRESPONDING PARTS LISTS FOR QUANTITIES OF ITEMS 3, 4, 5, 6, 7, 12 & 14.



193-7403-1
193-7403-2



193-7403-3
193-7403-4

Aeroflex / Weinschel
CAGE CODE 93459 MADE IN THE USA
MODEL: 8310-352-4-T SERNO:
FREQ: DC TO 6.0GHz
CHAN: 4
ATTEN: 103/1 dB

DETAIL "A"

8310-352-4-T	193-7403-4
8310-352-3-T	193-7403-3
8310-352-2-R	193-7403-2
8310-352-2-F	193-7403-2
8310-352-1-R	193-7403-1
8310-352-1-F	193-7403-1
MODEL NO.	PARTS LIST

PROPRIETARY NOTICE
THIS DOCUMENT IS COMMERCIAL CONFIDENTIAL AND THE INFORMATION CONTAINED THEREIN MAY NOT BE DISSEMINATED, NOR IS REPRODUCTION PERMITTED EXCEPT BY WRITTEN AUTHORIZATION.

8310-352-4-T	QTY REQD	FSCM NO.	PART OR IDENTIFYING NO.	NOMENCLATURE OR DESCRIPTION	MATERIAL SPECIFICATION	ZONE	ITEM NO.
8310-352-3-T				PARTS LIST			
8310-352-2-R				Aeroflex / Weinschel			
8310-352-2-F				ATTENUATOR UNIT DC TO 6GHz ASSEMBLY			
8310-352-1-R				APPROVALS	DATE	SIZE	FSCM NO.
8310-352-1-F				DRWN: R. SHOCK	06-05	D	93459
				CHECKED: A. HOPKINS	06-05	DWG. NO.	193-7403
				ENGR: B. KNILL	06-05	REV.	A
				ISSUED		SCALE	1 : 1
							SHEET 1 OF 1

8

7

6

5

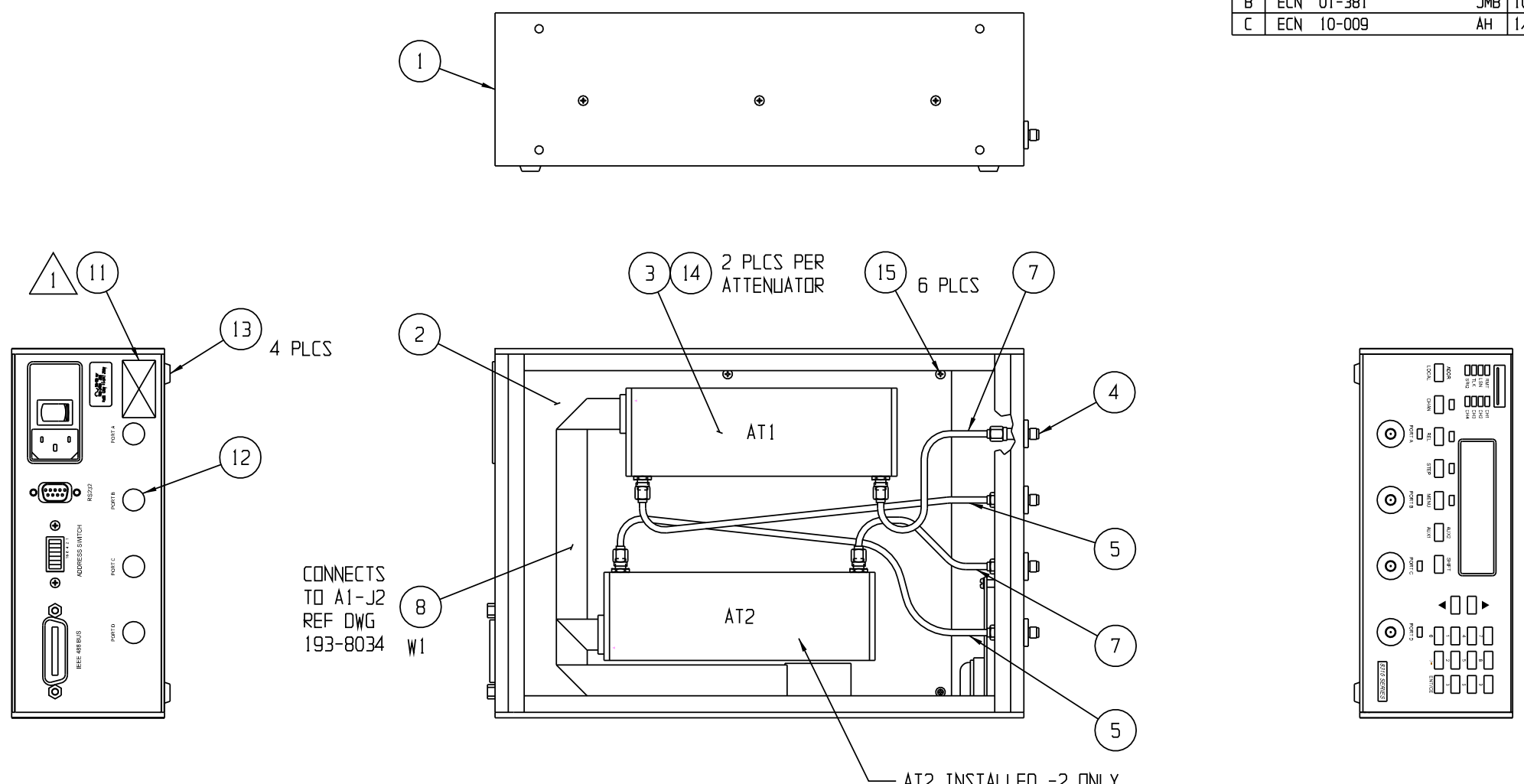
4

3

2

1

REVISIONS			
REV.	DESCRIPTION	DATE	APPROVED
A	ERN 01-52		
B	ECN 01-381	JMB 10/02/01	
C	ECN 10-009	AH 1/8/2010	



- NOTES:
- PERMANENTLY MARK MODEL NO., CHANNEL NO. & SERIAL NO. ON LABEL, ITEM 11. SEE DETAIL A.
 - AFTER ASSEMBLY, CONFIGURE AND TEST.
 - SEE CORRESPONDING PARTS LIST FOR QUANTITIES OF ITEM 4, 5, 7, 12 & 14.
 - MODEL NUMBERS ENDING IN -R ARE TO BE INSTALLED OUT THE REAR OF UNIT.

8310-204-2-R	193-7204-2
8310-204-2-F	193-7204-2
8310-204-R	193-7204-1
8310-204-F	193-7204-1
MODEL NO.	PARTS LIST

FOR PARTS LIST SEE 193-7204-1/2

Aeroflex/Weinschel
 CASE CODE 50000 MADE IN THE USA
 MODEL: 8310-204-X SERNO:
 FREQ: DC TO 18 GHz
 CHAN: X
 ATTEN: 62 /2dB STEPS CE

DETAIL A

PROPRIETARY NOTICE
 THIS DOCUMENT IS COMMERCIAL CONFIDENTIAL AND THE INFORMATION CONTAINED THEREIN MAY NOT BE DISSEMINATED, NOR IS REPRODUCTION PERMITTED EXCEPT BY WRITTEN AUTHORIZATION.

8310	USED ON
NEXT ASSY	APPLICATION

QTY REQD	FSCM NO.	PART OR IDENTIFYING NO.	NOMENCLATURE OR DESCRIPTION	MATERIAL SPECIFICATION
PARTS LIST				
UNLESS OTHERWISE SPECIFIED DIMENSIONS ARE IN INCHES TOLERANCES ARE: FRACTIONS DECIMALS ANGLES $\pm 1/64$.XX $\pm .01$ XXX $\pm .003$ $\pm 1/2^\circ$			CONTRACT NO.	
APPROVALS		DATE		
DRAWN JMB		03-16-01		
CHECKED				
ENGR. KNILL		03-20-01		
ISSUED				
SIZE FSCM NO.		DWG. NO.		REV.
C 93459		193-7204-1/2		C
SCALE 2/1		SHEET 1 OF 1		

Aeroflex / Weinschel
 ASSY, ATTEN UNIT,
 MODEL 8310

4

3

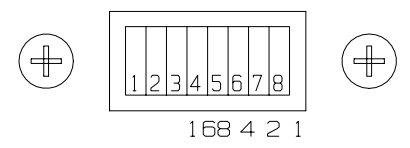
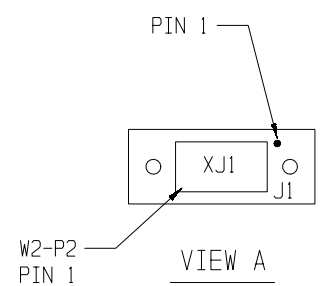
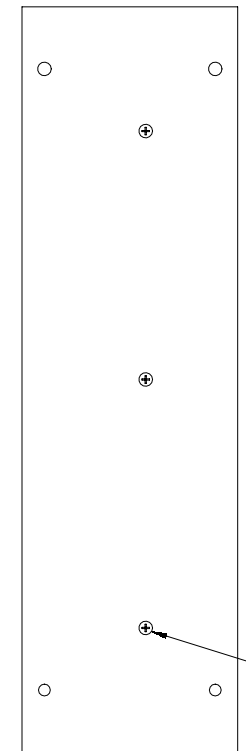
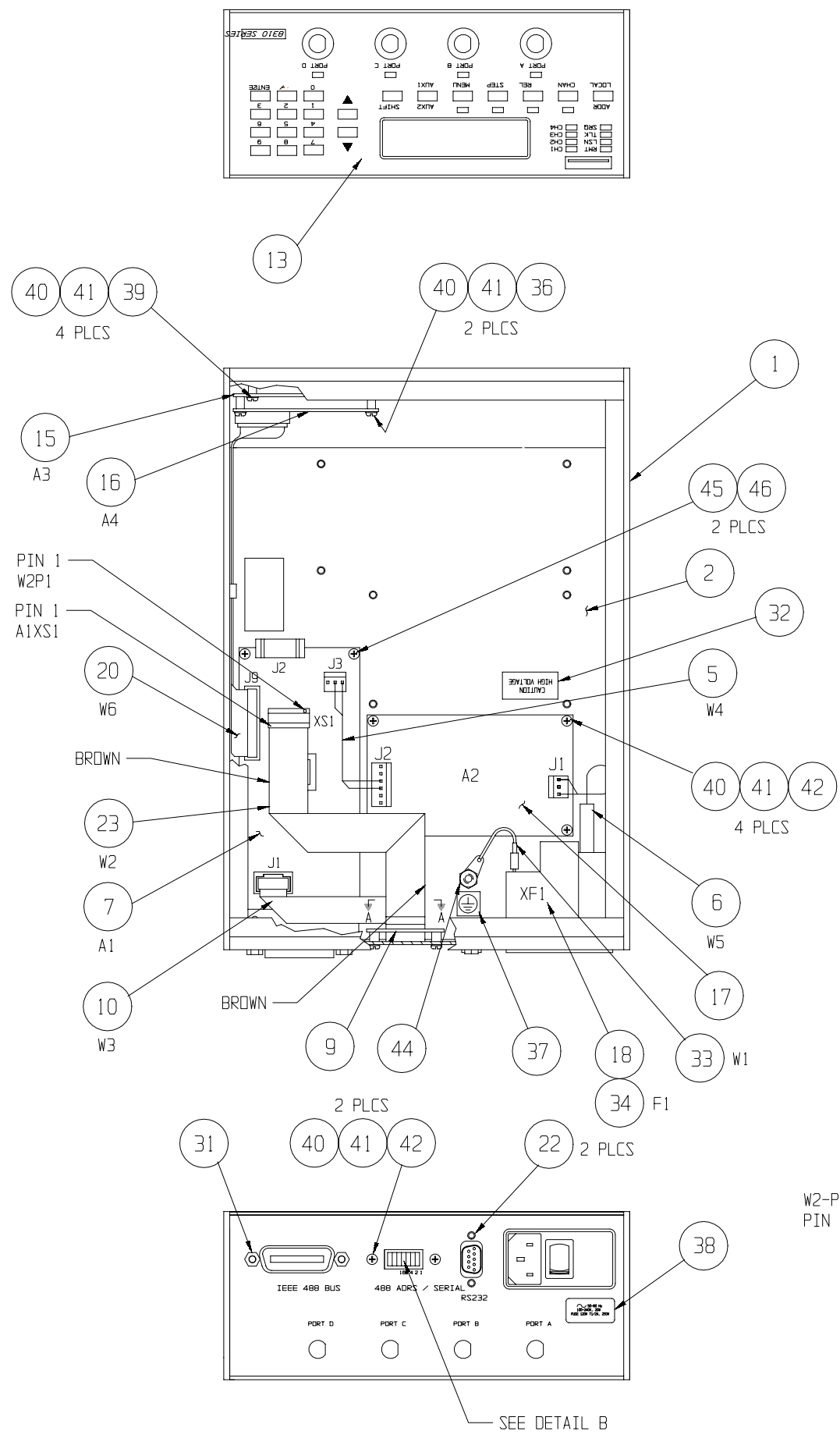
2

1

DWG. NO. SH 1 REV.

REVISIONS			
REV.	DESCRIPTION	DATE	APPROVED
A	ERN 99-5		
B	ECN 99-107	GT 5-7-99	

NOTES:
 1. POWER CORD, ITEM 24, SUPPLIED BUT NOT SHOWN.



488 ADRS / SERIAL
 DETAIL B
 SCALE: 2/1

PROPRIETARY NOTICE
 THIS DOCUMENT IS COMMERCIAL CONFIDENTIAL AND THE INFORMATION CONTAINED THEREIN MAY NOT BE DISSEMINATED, NOR IS REPRODUCTION PERMITTED EXCEPT BY WRITTEN AUTHORIZATION.

FOR PARTS LIST SEE PL193-8034

QTY REQD	FSCM NO.	PART OR IDENTIFYING NO.	NOMENCLATURE OR DESCRIPTION	MATERIAL SPECIFICATION
PARTS LIST				
UNLESS OTHERWISE SPECIFIED DIMENSIONS ARE IN INCHES TOLERANCES ARE:		CONTRACT NO.		
FRACTIONS	DECIMALS	ANGLES	Weinschel Corporation	
$\pm 1/64$	$.XX \pm .01$	$\pm 1/2^\circ$		
MATERIAL		APPROVALS	DATE	ASSY, ATTENUATOR UNIT, MODEL 8310
8310		G. THOMAS	1-13-99	
FINISH		CHECKED		
NEXT ASSY USED ON		ENGR.		
APPLICATION		ISSUED		SCALE 1/2
DO NOT SCALE DRAWING		DWG. NO. 193-8034		REV. B
		SHEET 1 OF 1		

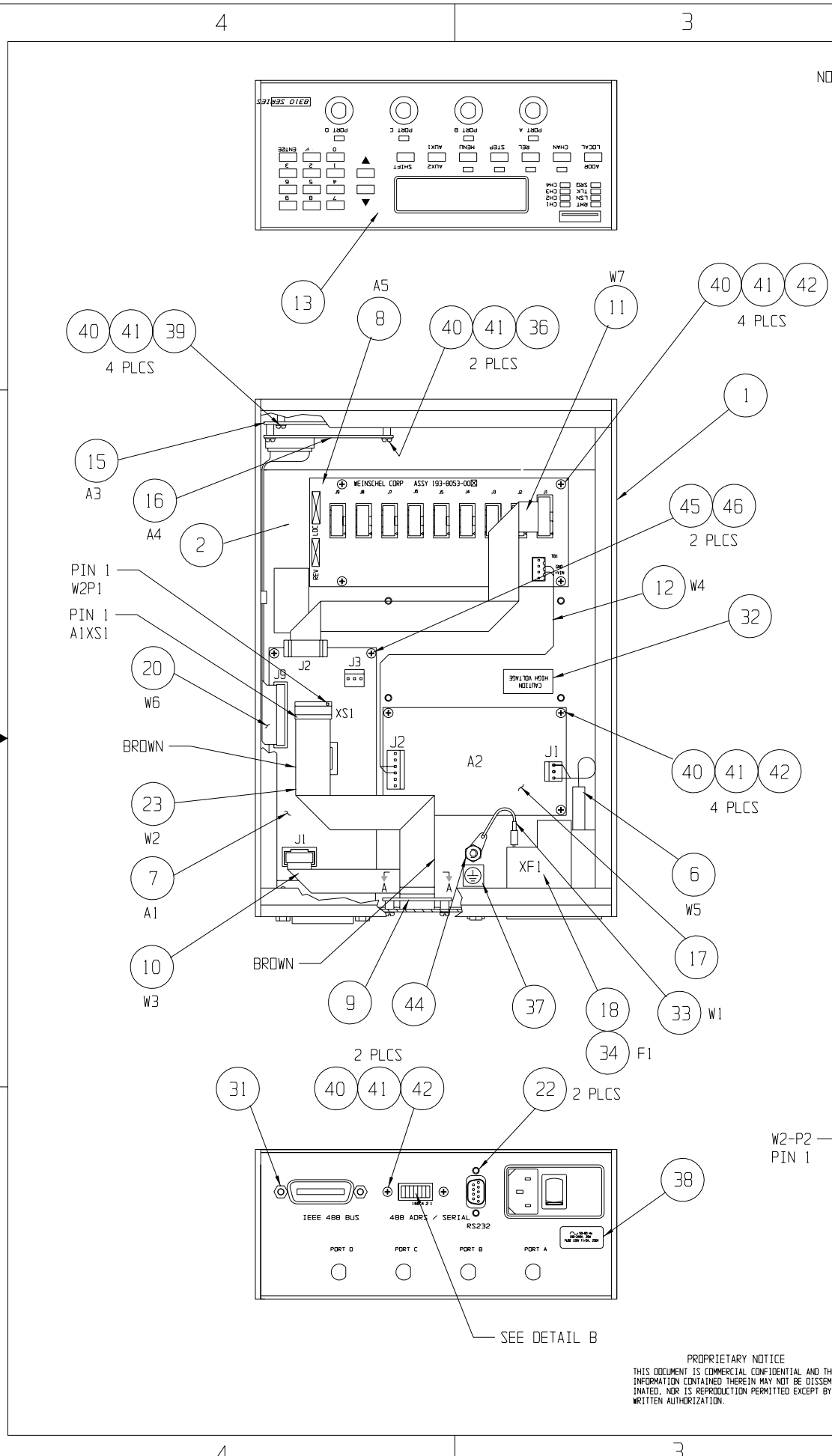
4

3

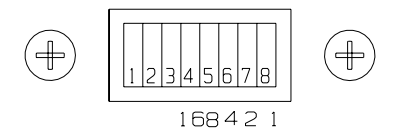
2

1

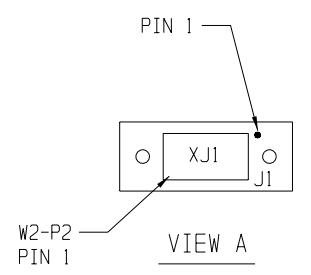
NOTES:
1. POWER CORD, ITEM 24, SUPPLIED BUT NOT SHOWN.



FROM	TO	REF DES	ITEM
A1-J2	A5-J1	W7	11
A1-J9	A4-J1	W6	20
XF1	A2-J1	W5	6
A2-J2	A5-TB1	W4	12
A1-J3	R/P RS-232	W3	10
A1-XS1	S1-J1	W2	23
XF1	CHASSIS	W1	33



488 ADRS / SERIAL
DETAIL B
SCALE: 2/1



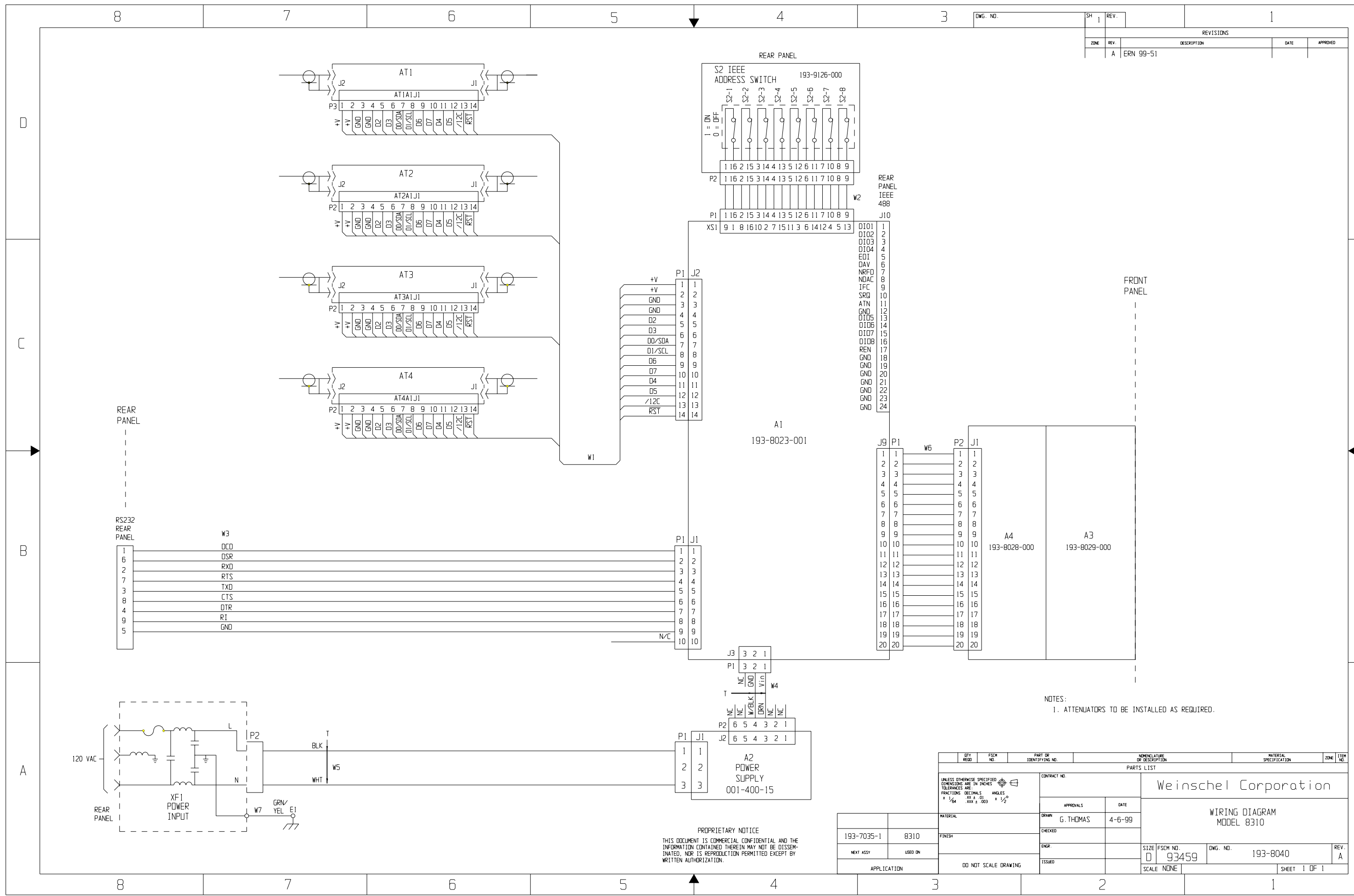
W2-P2
PIN 1

FOR PARTS LIST SEE PL193-8034-1

QTY	FSCM	PART OR IDENTIFYING NO.	NOMENCLATURE OR DESCRIPTION	MATERIAL SPECIFICATION
			PARTS LIST	
UNLESS OTHERWISE SPECIFIED DIMENSIONS ARE IN INCHES TOLERANCES ARE:		CONTRACT NO.		
FRACTIONS	DECIMALS	ANGLES	MCE/Weinschel Corporation	
$\pm 1/64$	$.XX \pm .01$	$\pm 1/2^\circ$	ASSY, ATTENUATOR UNIT, BASE MODEL 8310 (+5V)	
		APPROVALS		DATE
		DRAWN HOPKINS		5/21/02
		CHECKED		
		ENGR. KNILL		5/02
		ISSUED		
MATERIAL		SIZE		FSCM NO.
FINISH		C		93459
NEXT ASSY		DWG. NO.		193-8034-1
USED ON		REV.		A
APPLICATION		SCALE		1/2
DO NOT SCALE DRAWING		SHEET		1 OF 1

PROPRIETARY NOTICE
THIS DOCUMENT IS COMMERCIAL CONFIDENTIAL AND THE INFORMATION CONTAINED THEREIN MAY NOT BE DISSEMINATED, NOR IS REPRODUCTION PERMITTED EXCEPT BY WRITTEN AUTHORIZATION.

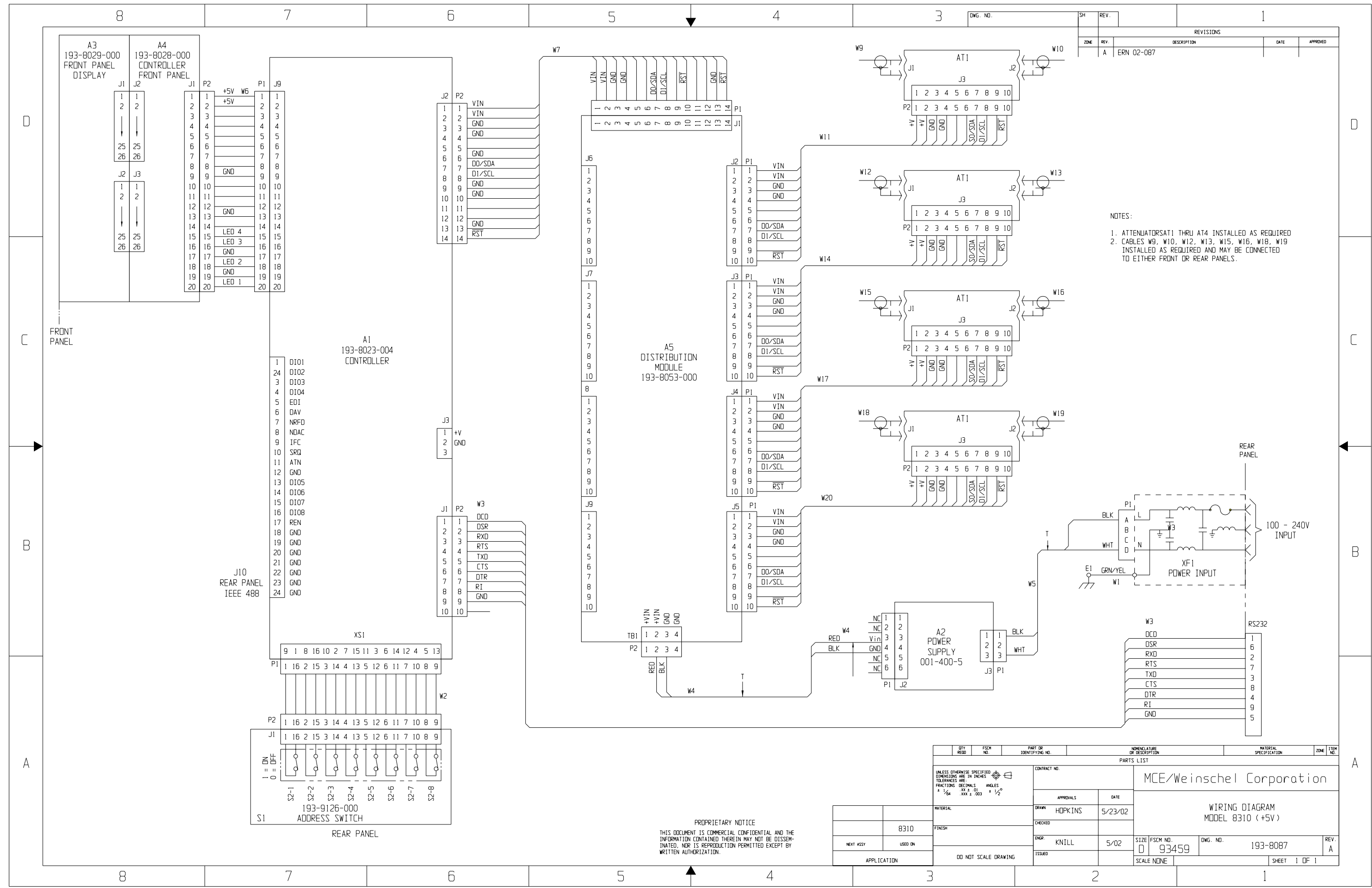
DWG. NO.		SH 1		REV.		1	
ZONE		REV.		DESCRIPTION		REVISIONS	
A		ERN 99-51				DATE	
						APPROVED	



NOTES:
1. ATTENUATORS TO BE INSTALLED AS REQUIRED.

PROPRIETARY NOTICE
THIS DOCUMENT IS COMMERCIAL CONFIDENTIAL AND THE INFORMATION CONTAINED THEREIN MAY NOT BE DISSEMINATED, NOR IS REPRODUCTION PERMITTED EXCEPT BY WRITTEN AUTHORIZATION.

QTY	FSCM	PART OR IDENTIFYING NO.	NOMENCLATURE OR DESCRIPTION	MATERIAL SPECIFICATION	ZONE	ITEM NO.
PARTS LIST						
CONTRACT NO.			Weinschel Corporation			
DRAWN G. THOMAS			DATE 4-6-99			
CHECKED			ENGR.			
NEXT ASSY			USED ON		ISSUED	
APPLICATION			DD NOT SCALE DRAWING		SCALE NONE	
193-7035-1			8310		DWG. NO. 193-8040	
					REV. A	
					SIZE FSCM NO. D 93459	
					SHEET 1 OF 1	



REV. NO.		REVISIONS			
ZONE	REV.	DESCRIPTION	DATE	APPROVED	
A	1	ERN 02-087			

- NOTES:
- ATTENUATORS AT1 THRU AT4 INSTALLED AS REQUIRED
 - CABLES W9, W10, W12, W13, W15, W16, W18, W19 INSTALLED AS REQUIRED AND MAY BE CONNECTED TO EITHER FRONT OR REAR PANELS.

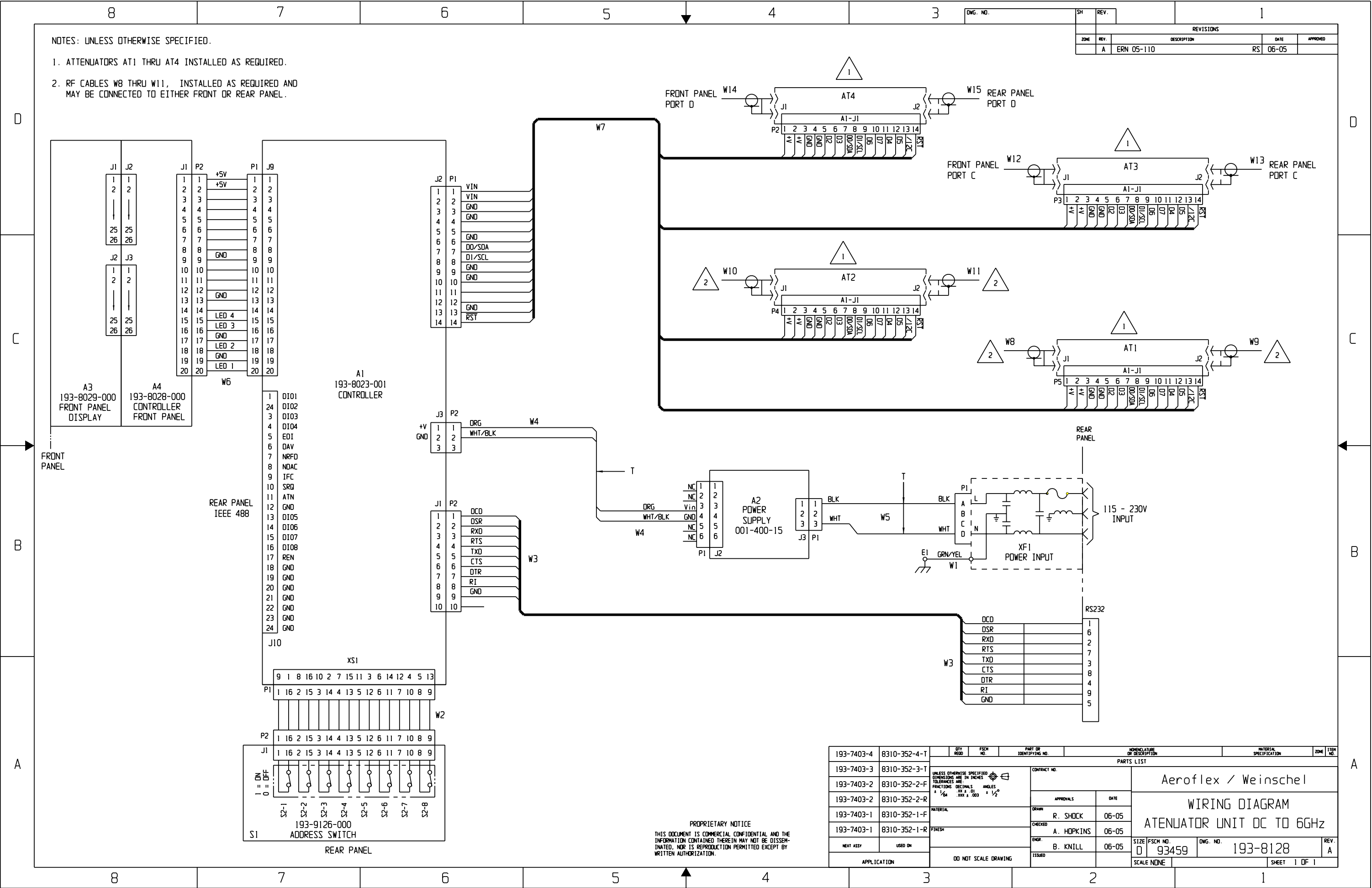
QTY	ESCH. NO.	PART OR IDENTIFYING NO.	ABBREVIATURE OR DESCRIPTION	MATERIAL SPECIFICATION	ZONE	TYP. NO.
PARTS LIST						
MCE/Weinschel Corporation			WIRING DIAGRAM MODEL 8310 (+5V)			
APPROVALS		DATE		SIZE FSCM NO. DWG. NO. REV.		
DRAWN HOPKINS		5/23/02		D 93459 193-8087 A		
CHECKED				SCALE NONE		
ENGR. KNILL		5/02		SHEET 1 OF 1		
ISSUED						

PROPRIETARY NOTICE
 THIS DOCUMENT IS COMMERCIAL CONFIDENTIAL AND THE INFORMATION CONTAINED THEREIN MAY NOT BE DISSEMINATED, NOR IS REPRODUCTION PERMITTED EXCEPT BY WRITTEN AUTHORIZATION.

REV. NO.		REVISIONS		
ZONE	REV.	DESCRIPTION	DATE	APPROVED
A	ERN 05-110		RS 06-05	

NOTES: UNLESS OTHERWISE SPECIFIED.

- ATTENUATORS AT1 THRU AT4 INSTALLED AS REQUIRED.
- RF CABLES W8 THRU W11, INSTALLED AS REQUIRED AND MAY BE CONNECTED TO EITHER FRONT OR REAR PANEL.



PROPRIETARY NOTICE
THIS DOCUMENT IS COMMERCIAL CONFIDENTIAL AND THE INFORMATION CONTAINED THEREIN MAY NOT BE DISSEMINATED, NOR IS REPRODUCTION PERMITTED EXCEPT BY WRITTEN AUTHORIZATION.

QTY	PSCH	PART OR IDENTIFYING NO.	DESCRIPTION	MATERIAL SPECIFICATION	ZONE	ITEM NO.
193-7403-4	8310-352-4-T					
193-7403-3	8310-352-3-T					
193-7403-2	8310-352-2-F					
193-7403-2	8310-352-2-R					
193-7403-1	8310-352-1-F					
193-7403-1	8310-352-1-R					

PARTS LIST		CONTRACT NO.		Aeroflex / Weinschel	
APPROVALS	DATE	WIRING DIAGRAM			
DRWN: R. SHOCK	06-05	ATTENUATOR UNIT DC TO 6GHz			
CHECKED: A. HOPKINS	06-05				
ENGR: B. KNILL	06-05	SIZE: FSCH NO. 0 93459	DWG. NO. 193-8128	REV. A	
ISSUED		SCALE: NONE	SHEET 1 OF 1		