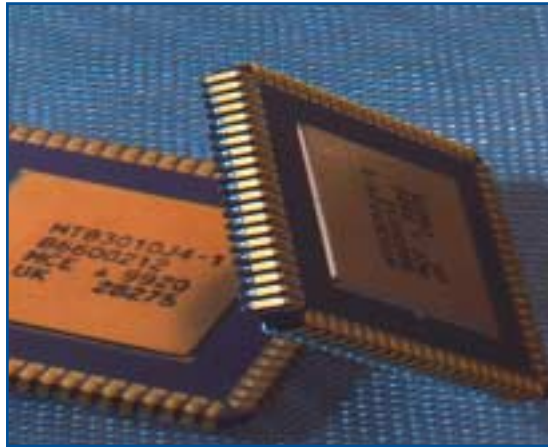


# STANDARD PRODUCTS

## DATABUS – ARINC 429



- One way digital information transmission system
- Words of 32 bits are transmitted in bipolar return to zero format
- Rise and fall times specified to limit EMI with other systems on aircraft
- Up to 20 receivers can be attached to a transmitter
- Custom product variants based on ARINC 429 available

## MCE CHIP SET

MCE Product Designation	Product Type	Package Type	No of I/O
MT 70003	Single channel decoder	DIL J-lead	64 68
MT 70014	Two channel encoder	DIL J-lead	24 44
MT 72038	Four channel receiver	DIL J-lead	24 28
MT 72066	Two channel receiver	DIL J-lead	16 28
MT 34013	Eight channel decoder	DIL J-lead	48 68

## FEATURES

- Chip set comprises 5 circuits which together form the basic building blocks for the simplest single channel receiver to complex multi-channel transmitter/receiver systems
- All devices operate with single +5V supply with low power consumption <50mW
- All devices screened to CECC 90000 Level B or MIL-STD- 883 Class B, if required
- Other package options available with a tooling charge if not already in production

## DATABUS – ARINC 429

### MT 70003 – SINGLE CHANNEL DECODER

- 16/24 bit parallel interface
- Automatic address recognition option on 8/10 bits
- Built in parity and word length error detection
- HIGH/LOW speed programmable
- Additional digital noise rejection built in

### MT 70014 – TWO CHANNEL ENCODER

- 8 bit parallel interface
- TTL/CMOS compatible I/P
- Automatic parity generation
- HIGH/LOW speed programmable independently in each channel

### MT 72038 – FOUR CHANNEL RECEIVER/ MT 72066 TWO CHANNEL RECEIVER

- Converts received ARINC 429 data levels to 2 line CMOS compatible levels
- Adjustable threshold using single external resistor
- Input resistors protect from input line transients
- Reduces system package count
- Can be used as ARINC 429, 561, 568, 575 or TACAN interface

### MT 34013 – EIGHT CHANNEL DECODER

- 8/16 bit parallel interface
- 3 channels programmable to HIGH/LOW speed data, 5 channels low speed
- Programmable test I/P to all channels
- Built in parity and word length error detection
- Additional digital noise rejection built in