



A passion for performance.

Aeroflex Colorado Springs

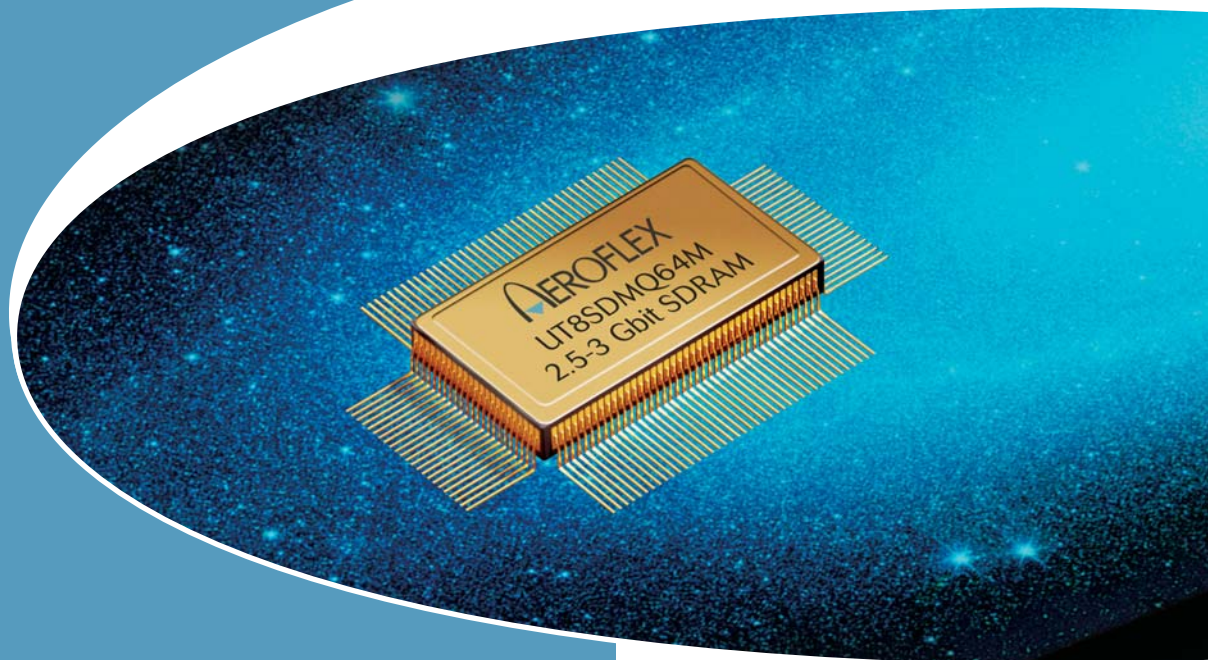
**Over 20 years experience
in HiRel memories**

50 to 300 krads(Si)

4.0 Mbit to 3.0 Gbit options

**Best-in-class bit density
per square inch**

Flight proven



HiRel Memories

HiRel MEMORIES

HiRel Memories

aeroflex.com/memories

	Configuration	Voltages	Access/Clock	Total Dose rad(Si)	LET _{TH} (0.25) MeV - cm ² /mg	Saturated Cross Section (cm ²) per bit	Latch-Up Immune MeV - cm ² /mg	CMOS Inputs	Flatpack	QML Q & V	SMD #
UT8R128K32 SRAM	128K x 32	3.3V*	15 ns	3.0E5	>50	1.7E-7	>100	■	68	Q,V	5962-03236
UT8R512K8 SRAM	512K x 8	3.3V*	15 ns	3.0E5	>50	1.7E-7	>100	■	36	Q,V	5962-03235
UT8CR512K32 SRAM	512K x 32	3.3V*	17 ns	3.0E5	>50	1.7E-7	>100	■	68	Q,V	5962-04227
UT8ER512K32 SRAM Monolithic	512K x 32	3.3V*	20 ns	1.0E5	>50	NA**	>100	■	68	Q,V	5962-06261
UT8Q512E 4M SRAM	512K x 8	3.3V	20 ns	5.0E4	>50	2.8E-8	>100	■	36	Q,V	5962-99607
UT8Q512K32E 16M SRAM MCM	512K x 32	3.3V	25 ns	5.0E4	>50	2.8E-8	>100	■	68	Q	5962-01533
UT9Q512E 4M SRAM	512K x 8	5V	20 ns	5.0E4	>50	2.8E-8	>100	■	36	Q,V	5952-00536
UT9Q512K32E 16M SRAM MCM	512K x 32	5V	25 ns	5.0E4	>50	2.8E-8	>100	■	68	Q	5962-01511
UT8ER1M32 32M SRAM MCM	1M x 32	3.3V*	20 ns	1.0E5	>50	NA**	>100	■	132	Q,V***	5962-10202
UT8ER2M32 64M SRAM MCM	2M x 32	3.3V*	20 ns	1.0E5	>50	NA**	>100	■	132	Q,V***	5962-10203
UT8R1M39 40M SRAM MCM	1M x 39	3.3V*	20 ns	1.0E5	>50	8.0E-8	>100	■	132	Q,V***	5962-10205
UT8R2M39 80M SRAM MCM	2M x 39	3.3V*	20 ns	1.0E5	>50	8.0E-8	>100	■	132	Q,V***	5962-10206

Please call 800-645-8862 for more information or visit the web site at aeroflex.com/memories

*1.8V core **The SEU error rate is driven by particle flux and EDAC scrub rate. The error rate is 6×10^{-16} errors/bit-day. ***QML V pending

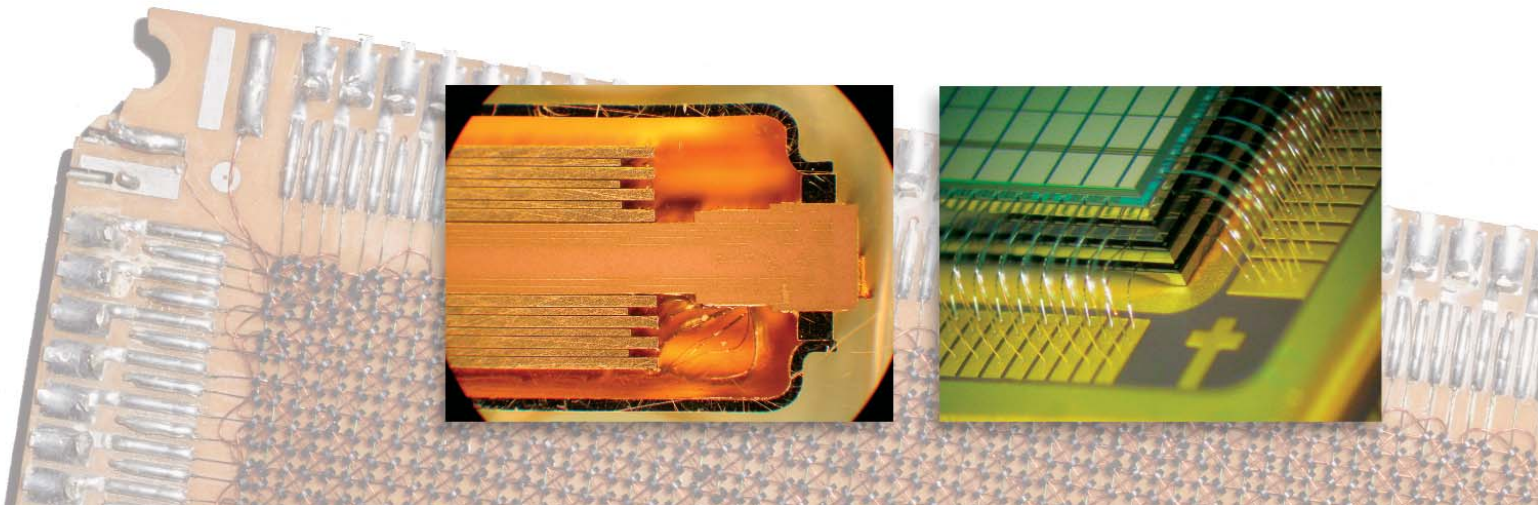
QCOTS™ Memories (Quantified Commercial Off-the-Shelf)

aeroflex.com/memories

	Configuration	Voltages	Access/Clock	Total Dose rad(Si)	LET _{TH} (0.25) MeV - cm ² /mg	Saturated Cross Section (cm ²) per bit	Latch-Up Immune MeV - cm ² /mg	CMOS Inputs	TTL Inputs	Flatpack	QML Q, T & V	SMD #
UT7Q512 4M SRAM	512K x 8	5V	100 ns	3.0E4	5	1.0E-7	>80	■		32	Q,T	5962-99606
UT8Q512 4M SRAM*	512K x 8	3.3V	20 ns	5.0E4	10	5.0E-9	>80	■		36	Q,T	5962-99607
UT8Q1024K8 8M SRAM*	1024K x 8	3.3V	25 ns	5.0E4	10	5.0E-9	>80	■		44	Q,T	5962-01532
UT8Q512K32 16M SRAM MCM*	512K x 32	3.3V	25 ns	5.0E4	10	5.0E-9	>80	■		68	Q,T	5962-01533
UT8SDMQ64M40 2.5Gb SDRAM MCM	64M x 40	3.3V	133 MHz	5.0E4	21	7.6E-10	>100	■		128	Q,Q+**	TBD
UT8SDMQ64M48 3.0Gb SDRAM MCM	64M x 48	3.3V	133 MHz	5.0E4	21	7.6E-10	>100	■		128	Q,Q+**	TBD

Please call 800-645-8862 for more information or visit the web site at aeroflex.com/memories

* Contact factory for availability. **QML qualification in process.



“

Aeroflex Colorado Springs has been providing HiRel memories for over 20 years – from PROMs to discrete SRAMs and SRAM Multi-Chip Modules (MCMs) – and now SDRAM MCMs. We have worked with you, listened to your requirements, and executed!

You wanted lower power consumption with higher performance; our SRAM unique read architecture allows this.

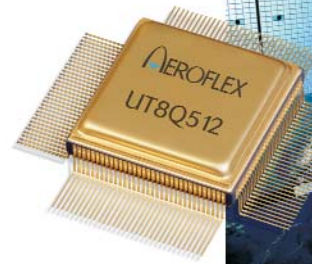
You wanted higher density; our packaging techniques achieve this.

What can we do for you next?"

– Anthony Jordan
Director of Standard Products

OUR PACKAGE HISTORY SHOWS OUR COMMITMENT TO IMPROVEMENT

We've worked diligently to constantly miniaturize our package footprints while all the while increasing density and speed. Our package history begins in 1980 with flat-packs, continues with planar MCMs, and now progresses to vertically-stacked die packages.



RadarSat II



Phoenix Mars mission



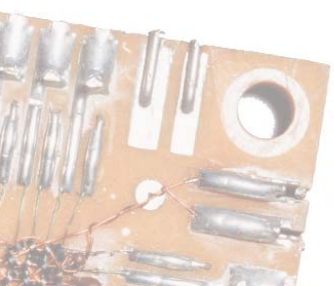
Themis system



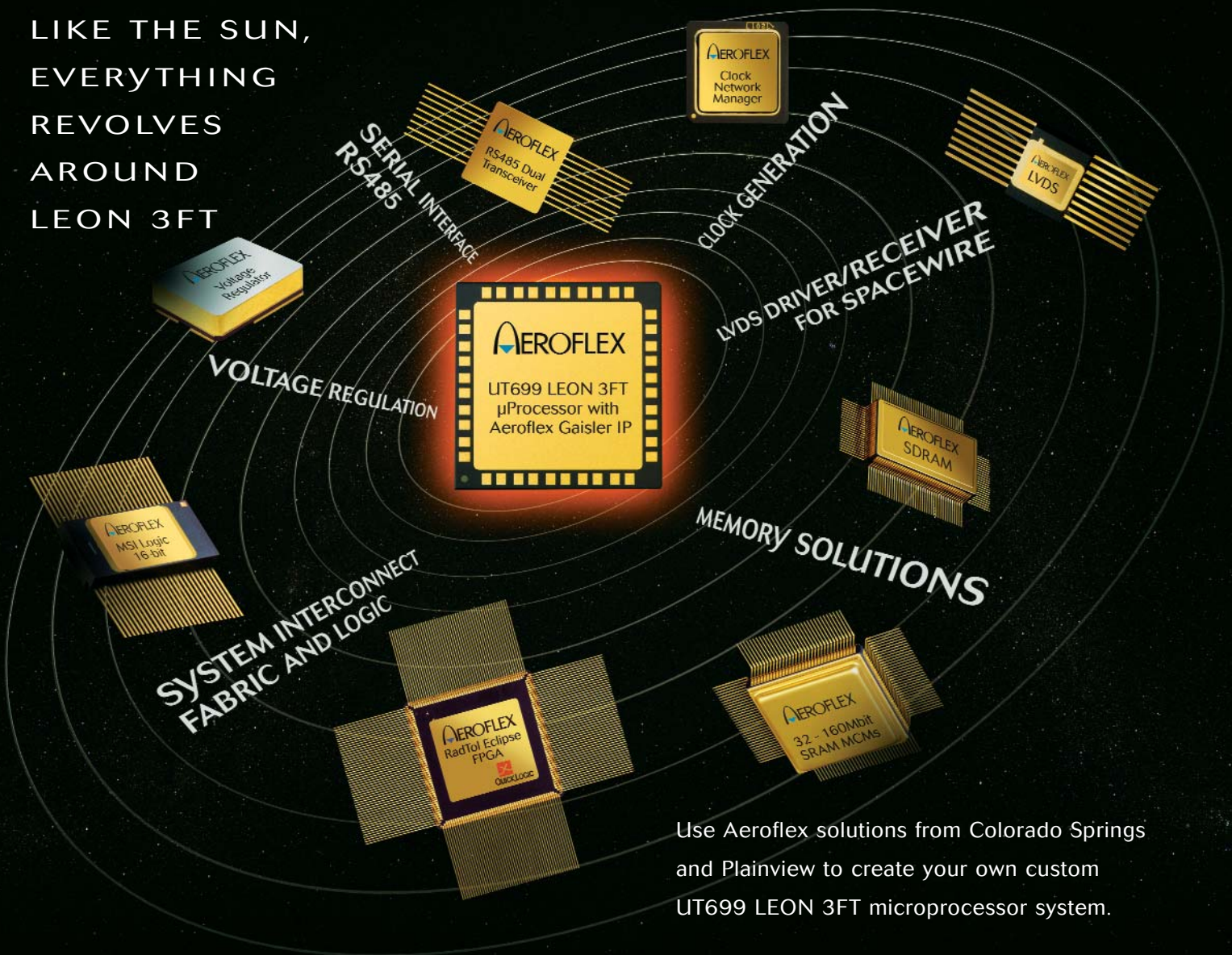
C/NOFS system



GLAST satellite



LIKE THE SUN,
EVERYTHING
REVOLVES
AROUND
LEON 3FT



Use Aeroflex solutions from Colorado Springs and Plainview to create your own custom UT699 LEON 3FT microprocessor system.

AEROFLEX
A passion for performance.

Aeroflex Colorado Springs

WEB SITE www.aeroflex.com/memories

TELEPHONE 800-645-8862



Our passion for performance is defined by three attributes represented by these three icons: solution-minded, performance-driven and customer-focused.