

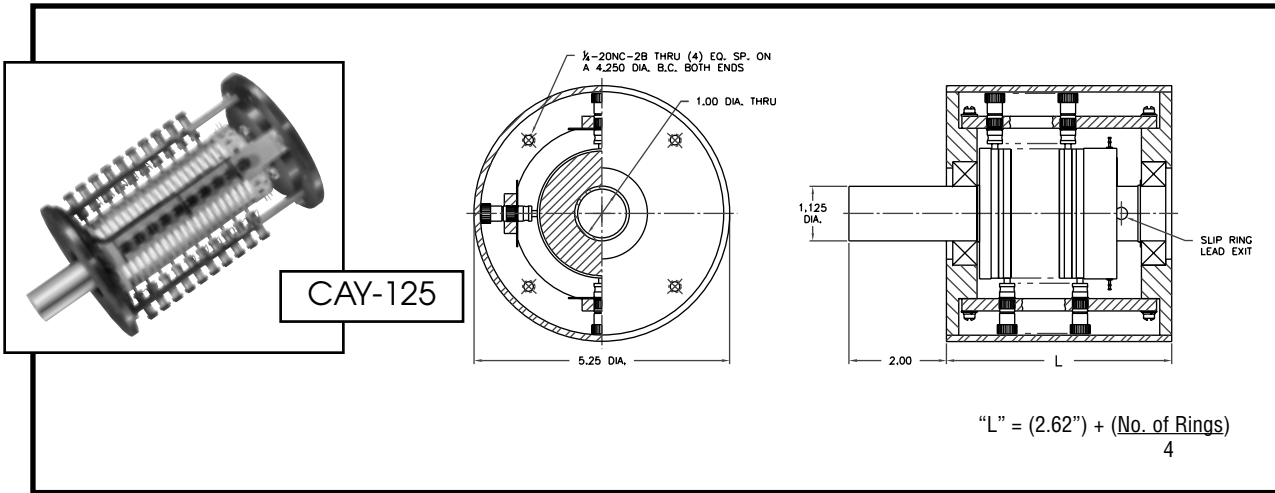
CAY-125 CAY-755

CARTRIDGE BRUSHES

multi-purpose slip ring assemblies

As an assembly...

A general purpose slip ring assembly especially applicable for strain gauge and thermocouple measurements where rotating detector circuits must be brought out to stationary measuring equipment. The 1 1/8" diameter shaft can be adapted to any manner of coupling into the drive mechanism. The unit is available with a rear shaft extension for attachment to additional rotating equipment. Inherent noise level is below five microvolts per milliamp and can be reduced even further by "running-in" either prior to shipment or on the job. The slip rings and brushes are terminated in convenient solder terminals.

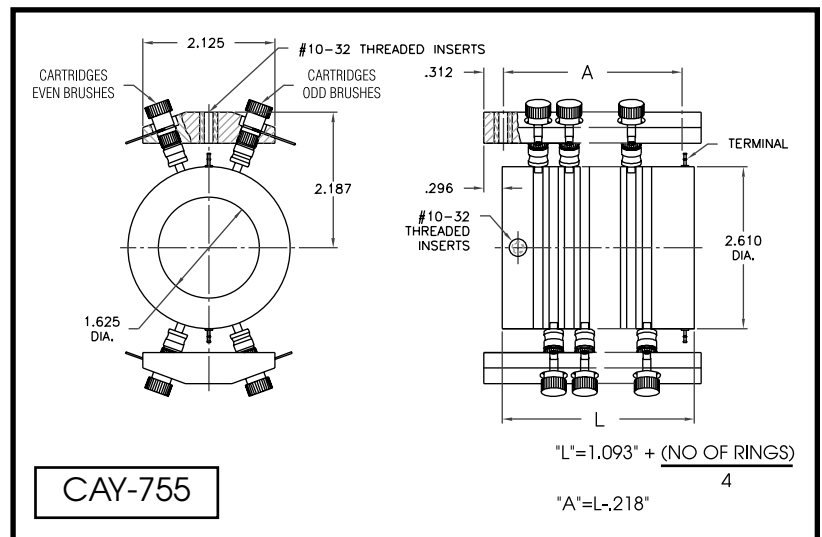


...or as separates

Our cartridge brush assemblies are made for applications which require an "easy brush replacement" feature and/or applications that require a brush wear height, which is not obtainable with a standard leaf and contact assembly. The standard cartridge, (AHW-16), has been used for many years on our CAY-125 assembly and is now available with the slip ring shown below, or individually, for use on any ring which is a minimum of 1/8" wide. The silver graphite brushes, coil springs, caps, and holders may be purchased individually or as an assembly and are available from stock.

M E C H A N I C A L

1. Rings: Silver
2. Brushes: Spring loaded silver graphite, 2 per ring
3. Torque: Assembly- .17 in.-lbs. per ring
Separates- .2 in.-lbs. per ring
4. Speed: 0-5,000 rpm max
5. Life: 1,000 hours min. @500 rpm
6. Rotation: Bi-directional



1. Current: 10 amp per ring
2. Voltage: Up to 250 volts
3. Dielectric strength: 500 vrms, all combinations
4. Contact resistance variation: 10 milliohms max. at max. speed
5. No. of Rings: 30 maximum

Cartridge Assembly:

Spring:
Holder:
Cap:
Silver Graphite Brush:

AHW-16

AHW-15
AHW-14
AHW-13
ABR-12-1