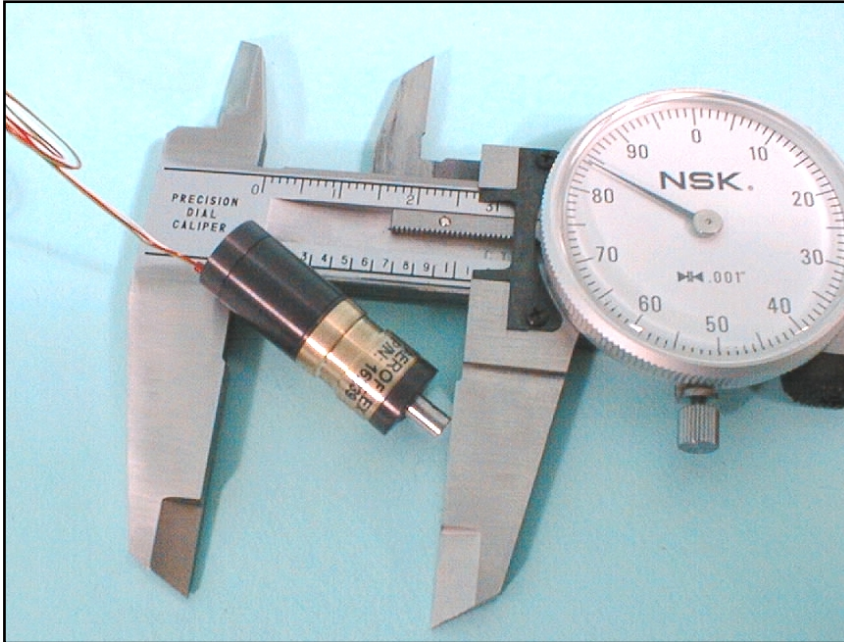
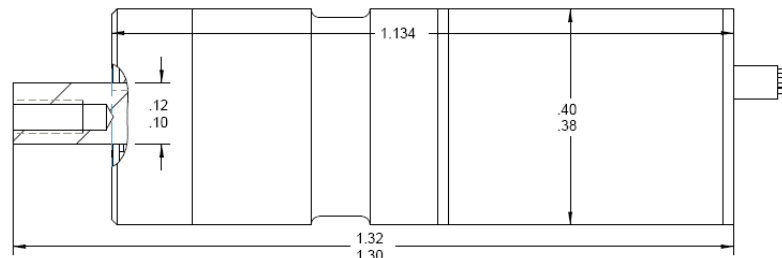
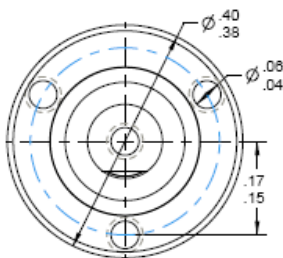


# 10MM Stepper Motor with Gearhead



Specification	16239	16240	Units	Basis
Gear Ratio	16:1	256:1	ratio	By Design
Output Step Angle	1.875	0.12	degrees	Nominal
Running Torque	1.1	13.5	in-oz	Nominal
Holding Torque	1.47	18.4	in-oz	Nominal
Unpowered Torque	0.3	6	in-oz	Nominal
Backlash	0.5	0.5	degrees	Maximum
Weight	0.32	0.35	ounces	Nominal

Motor Specification	Value	Units	Basis
Step Angle	30	degrees	Nominal
Step Rate	100	pps	Maximum
Voltage	2.2	volts DC	Maximum
Power	3	watts	Maximum
Phase Resistance	9	ohms	Nominal
Phase Inductance	100	$\mu$ H	Nominal
Phases/Poles	3/4	phases/poles	By Design
Redundant Windings	No	windings	By Design



For the very latest specifications visit [www.aeroflex.com/Motion](http://www.aeroflex.com/Motion)