

Model 1568 & 1568-1 Precision Coaxial Panel Adapters

dc to 26.5 GHz

Ruggedized SMA Connectors (female to female)



TEMPERATURE RANGE: -55°C to +100°C

CONSTRUCTION: Inner and outer conductors: heat treated beryllium copper, gold plated. Mounting hardware provided (Hex nut and lockwasher) Add -1 to model number for the optional stainless steel body.

CONNECTORS: SMA connectors per MIL-STD-348 interface dimensions - mate nondestructively with MIL-C-39012 connectors.

WEIGHT: 56.7 g (2 oz) maximum

PHYSICAL DIMENSIONS:

Features

- /// **High Repeatability.**
- /// **Rugged Injection Molded Connectors.**
- /// **Bulkhead Mounting** - Conveniently mounts on any panel using a D-hole shown below. Extra heavy construction for long life even with mistreatment makes this adapter suitable for instrument and subsystem front panel applications.

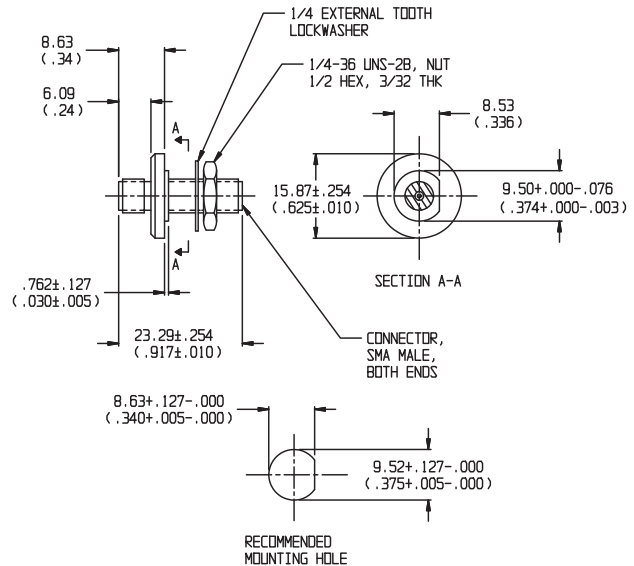
Specifications

NOMINAL IMPEDANCE: 50 Ω

FREQUENCY RANGE: dc to 26.5 GHz

| MAXIMUM SWR: | |
|-----------------|------|
| Frequency (GHz) | SWR |
| dc - 18 | 1.15 |
| 18 - 26.5 | 1.20 |

| INSERTION LOSS & REPEATABILITY (dB): | | |
|--------------------------------------|----------|---------------|
| Frequency (GHz) | Ins Loss | Repeatability |
| dc - 12.4 | < 0.30 | 0.01 |
| 12.4 - 18 | < 0.40 | 0.02 |
| 18.0 to 26.5 | < 0.50 | 0.02 |



NOTE:

1. All dimensions are given in mm (inches) and are maximum, unless otherwise specified.
2. Unit available with RoHS compliant materials, specify when ordering.