

Mechanical Phase Shifters



Model 917 Miniature In-Line Phase Shifter

dc to 20.0 GHz
200 Watts

Ruggedized 2.92mm Connector



Features

- /// **Self Locking** - Internal mechanism eliminates the need for a locking nut. Ideal for phase trimming in densely packaged systems with minimum accessibility.
- /// **Linear** - Provides a linear adjustable phase shift to 20 GHz in a very small in-line coaxial package.

Specifications

- NOMINAL IMPEDANCE:** 50 Ω
- FREQUENCY RANGE:** dc to 20.0 GHz
- INCREMENTAL PHASE SHIFT:** Adjustable to 225° @ 20 GHz; 100° at 9 GHz.
- RESOLUTION:** 0.5° per turn per GHz, typical (Adjustment shaft has 20 turns for full range).
- INSERTION PHASE:** 890° @ 10 GHz (Typical)
- PHASE VS FREQUENCY:** Nominally linear response
- INSERTION LOSS:** 0.8 dB maximum (0.5 dB typical @ 20 GHz)

| MAXIMUM SWR: | |
|-----------------------|-----|
| Frequency Range (GHz) | SWR |
| dc - 20 | 1.5 |

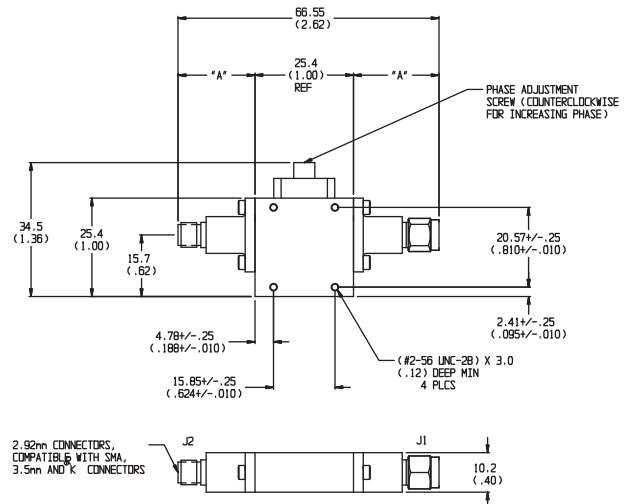
POWER RATING: 200 watts average
TEMPERATURE RANGE: -55°C to 125°C.

CONNECTOR: 2.92mm connector compatible with SMA, 3.5mm, SMK and other 2.92mm connectors. Available connector options are:

| Connector Options | Type/Description |
|-------------------|------------------|
| 1 | 2.92mm, Female |
| 2 | 2.92mm, Male |

WEIGHT: 45 g (1.6 oz)

PHYSICAL DIMENSIONS:



| CONN TYPE | DIM A |
|-----------|--------------|
| Female | 19.81 (0.78) |
| Male | 21.34 (0.84) |

NOTE: All dimensions are given in mm (inches) and are nominal ± 0.5 (0.02), unless otherwise specified.

MODEL NUMBER DESCRIPTION:

Example:

917 - XX

Basic Model Number

Connector Options*
1st digit is J1 side
2nd digit is J2 side