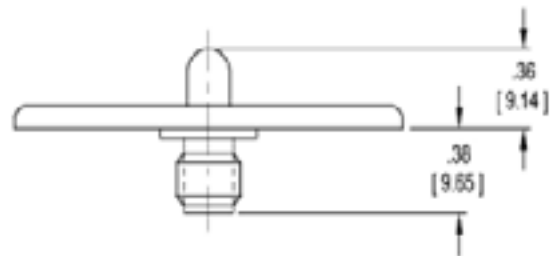
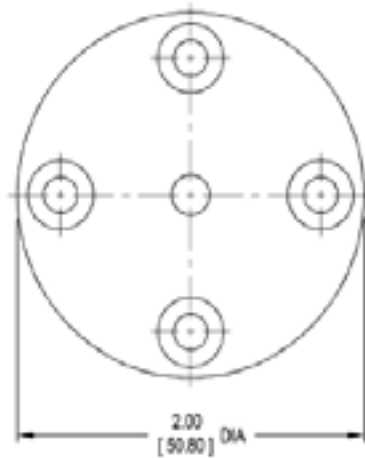


# Model 13C04800 Low Profile Broadband Stub

Model 13C04800 is a low profile quarter wave stub antenna featuring exceptionally broad bandwidth and high power handling capability. This unit is designed with an integral ground plane and has an omnidirectional pattern in azimuth.



PHYSICAL CONFIGURATION



# Model 13C04800

## Low Profile Broadband Stub

---

**FEATURES :**

- Broad Bandwidth
- High Power Handling
- Integral Ground Plane

---

**FREQUENCY RANGE:**

- 8 to 18 GHz

---

**VSWR:**

- 3.5 : 1 from 8 to 12 GHz
- 2.5 : 1 from 12 to 18 GHz

---

**NOMINAL GAIN:**

- 4 dBiL

---

**POLARIZATION:**

- Vertical

---

**ALTITUDE:**

- 70,000 ft.

---

**RF POWER:**

- 50 Watts avg.

---

**WEIGHT:**

- 1 Oz. max.

---

**INPUT**

- SMA Jack

---

**TEMPERATURE RANGE:**

- -65°F to ±250°F

---

**ENVIRONMENTAL SPECIFICATION:**

- MIL-HDBK-5400

